

\$799,800 - 129 Glenpatrick Drive Sw, Calgary

MLS® #A2264828

\$799,800

3 Bedroom, 2.00 Bathroom, 1,075 sqft
Residential on 0.16 Acres

Glenbrook, Calgary, Alberta

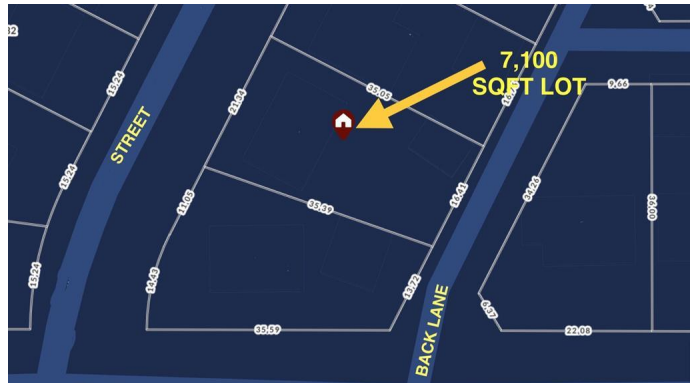
RENOVATED PROPERTY ON A HUGE 70ft WIDE LOT, located on a QUIET STREET IN GLENBROOK!! Perfect for living in and/or building 2 big infills! This beautifully updated property with VAULTED CEILINGS, features a total of 3 BEDROOMS, 2 FULL BATHROOMS, 2 LIVING ROOMS, FULLY FINISHED BASEMENT, an ENORMOUS BACKYARD, a LARGE CRAWL SPACE FOR STORAGE, AND A MASSIVE DOUBLE DETACHED GARAGE. Renovations include NEW; DOORS, KITCHEN, BATHROOMS, FLOORING, PAINT, LIGHT FIXTURES, APPLIANCES, and much more!

Built in 1961

Essential Information

MLS® #	A2264828
Price	\$799,800
Bedrooms	3
Bathrooms	2.00
Full Baths	2
Square Footage	1,075
Acres	0.16
Year Built	1961
Type	Residential
Sub-Type	Detached
Style	3 Level Split
Status	Active

Community Information



Address	129 Glenpatrick Drive Sw
Subdivision	Glenbrook
City	Calgary
County	Calgary
Province	Alberta
Postal Code	T3E 4L7

Amenities

Parking Spaces	2
Parking	Double Garage Detached
# of Garages	2

Interior

Interior Features	See Remarks
Appliances	Dishwasher, Electric Stove, Range Hood, Refrigerator
Heating	Forced Air
Cooling	None
Fireplace	Yes
# of Fireplaces	1
Fireplaces	Wood Burning
Has Basement	Yes
Basement	Full

Exterior

Exterior Features	Private Yard
Lot Description	Back Lane, See Remarks
Roof	Asphalt Shingle
Construction	See Remarks
Foundation	Poured Concrete

Additional Information

Date Listed	October 16th, 2025
Days on Market	14
Zoning	R-CG

Listing Details

Listing Office	CIR Realty
----------------	------------

Data is supplied by Pillar 9â„¢ MLSÂ® System. Pillar 9â„¢ is the owner of the copyright in its MLSÂ® System. Data is deemed reliable but is not guaranteed accurate by Pillar 9â„¢. The trademarks MLSÂ®, Multiple Listing ServiceÂ® and the associated logos are owned by The Canadian Real Estate Association (CREA) and identify the quality of services

provided by real estate professionals who are members of CREA. Used under license.