

# \$4,320 - 536 2 Avenue Se, Airdrie

MLS® #A2255430

**\$4,320**

0 Bedroom, 0.00 Bathroom,  
Commercial on 0.00 Acres

Edmonton Trail, Airdrie, Alberta

FOR RENT 1280QFT! GREAT LOCATION FOR YOUR BUSINESS, SMALL ,CAFE, Loan shop, Take out and Most Retailer welcome here .Right off of Edmonton trail and 2 ave Se.Near many shops, offices, Next to a hotel and across from a gas station and Antique Mall and Genesis centre and other major retailers are just mins away by foot and car. 1280 sqft of usable space. A larger bay that is 1911 sqft will be available as well in the near future . Possibility to combine the 2 units if in need for a larger bay

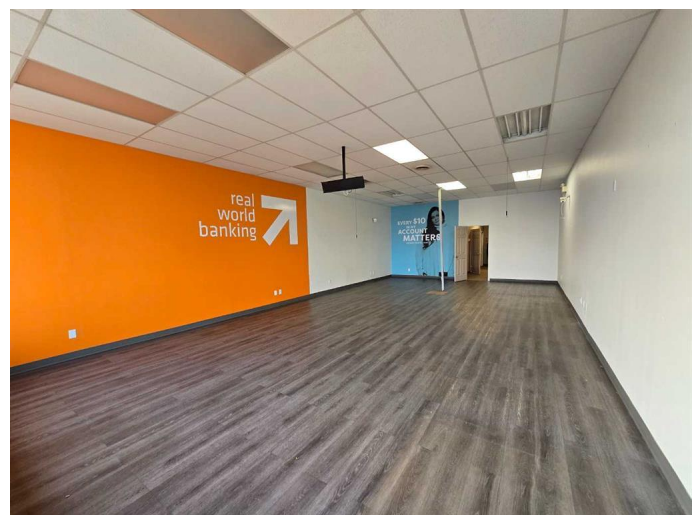
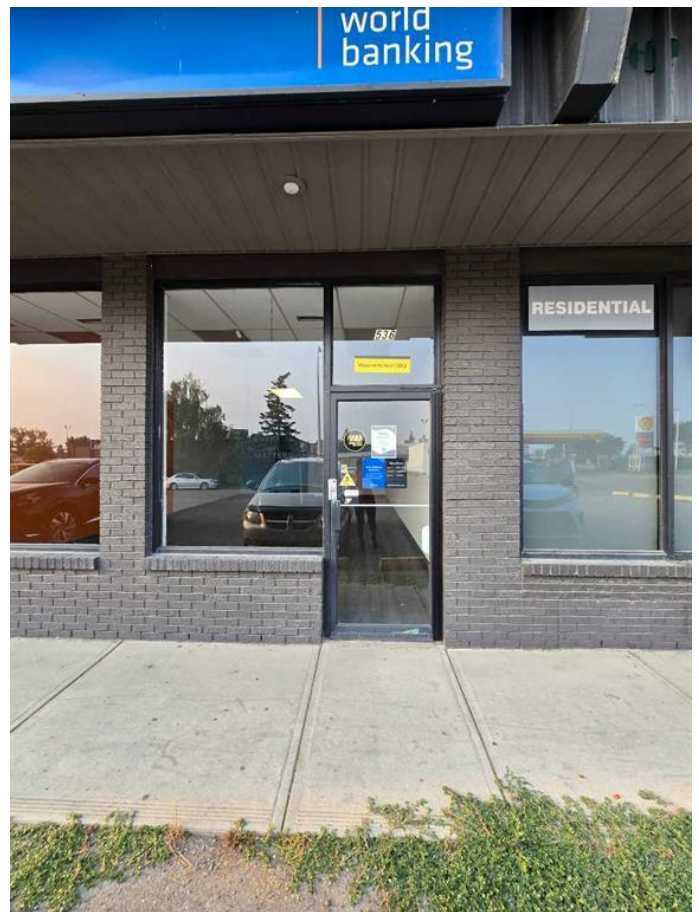
Built in 1978

## Essential Information

MLS® #	A2255430
Price	\$4,320
Bathrooms	0.00
Acres	0.00
Year Built	1978
Type	Commercial
Sub-Type	Retail
Status	Active

## Community Information

Address	536 2 Avenue Se
Subdivision	Edmonton Trail
City	Airdrie
County	Airdrie
Province	Alberta



Postal Code            T4B 1S2

### **Additional Information**

Date Listed            September 8th, 2025

Days on Market       1

### **Listing Details**

Listing Office           Century 21 Bravo Realty

Data is supplied by Pillar 9â„¢ MLS® System. Pillar 9â„¢ is the owner of the copyright in its MLS® System. Data is deemed reliable but is not guaranteed accurate by Pillar 9â„¢. The trademarks MLS®, Multiple Listing Service® and the associated logos are owned by The Canadian Real Estate Association (CREA) and identify the quality of services provided by real estate professionals who are members of CREA. Used under license.