

\$999,000 - 10, 12221 44 Street Se, Calgary

MLS® #A2255292

\$999,000

0 Bedroom, 0.00 Bathroom,
Commercial on 0.00 Acres

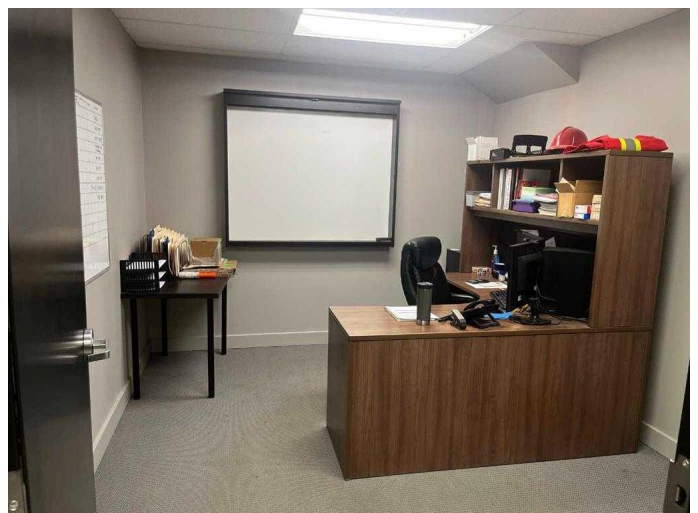
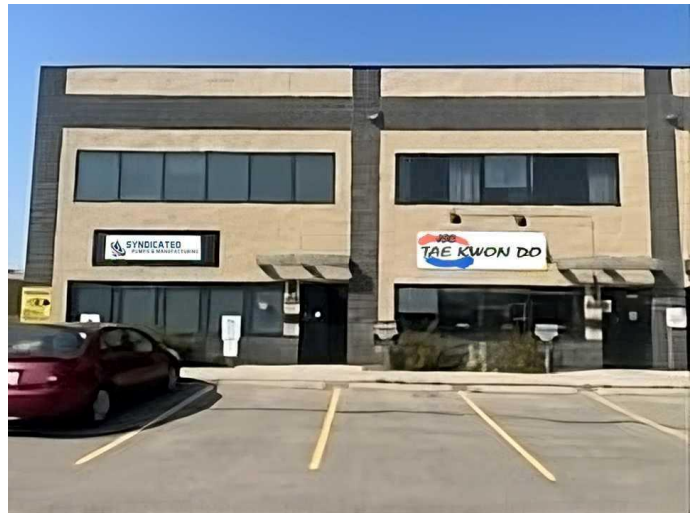
East Shepard Industrial, Calgary, Alberta

Fully leased, well maintained industrial condo located in the Southbend Industrial Park near Barlow Trail and Deerfoot Trail, and south of 114 Ave SE. Concrete block and concrete slab construction complete with a concrete mezzanine. The main floor consists of office space c/w kitchenette and handicap washroom and a large warehouse with 24'™ ceiling and bay door. The mezzanine, which has its own separate entrance and washroom, is set up as a fitness studio with excellent natural light given this is an end unit with south exposure. Main floor is leased to a service provider and the second floor leased to a fitness studio. 100-amp service, ample allocated parking, fenced storage unit, and with a cap rate of 6.2%. The condo unit is professionally managed for a hands-off investment. See Brochure for more information. Neighbouring Unit #20 preferably can be sold together. (#A2255374)

Built in 2005

Essential Information

MLS® #	A2255292
Price	\$999,000
Bathrooms	0.00
Acres	0.00
Year Built	2005
Type	Commercial
Sub-Type	Industrial



Status	Active
--------	--------

Community Information

Address	10, 12221 44 Street Se
Subdivision	East Shepard Industrial
City	Calgary
County	Calgary
Province	Alberta
Postal Code	T2Z 4H3

Additional Information

Date Listed	September 8th, 2025
Days on Market	2
Zoning	I-G

Listing Details

Listing Office	Associates Real Estate
----------------	------------------------

Data is supplied by Pillar 9â„¢ MLS® System. Pillar 9â„¢ is the owner of the copyright in its MLS® System. Data is deemed reliable but is not guaranteed accurate by Pillar 9â„¢. The trademarks MLS®, Multiple Listing Service® and the associated logos are owned by The Canadian Real Estate Association (CREA) and identify the quality of services provided by real estate professionals who are members of CREA. Used under license.