

\$420,000 - 14 Rasmussen Place, Standard

MLS® #A2252932

\$420,000

6 Bedroom, 2.00 Bathroom, 1,383 sqft

Residential on 0.20 Acres

NONE, Standard, Alberta

Oversized Detached Garage. Front Access.
25'X 23'. Morning Sun East Exposure Deck
8'x19

Built in 1974

Essential Information

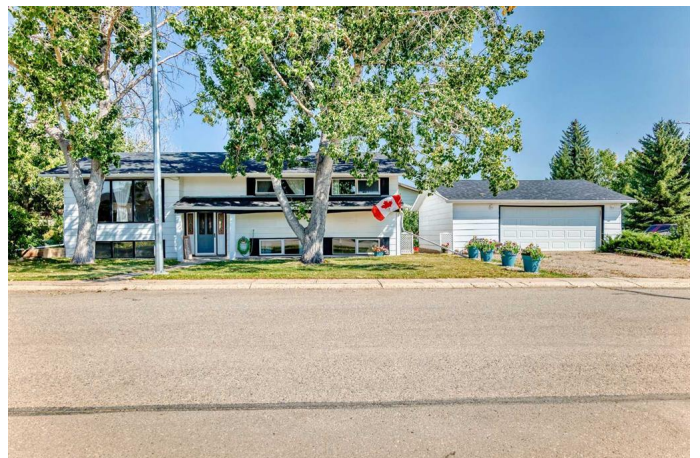
MLS® #	A2252932
Price	\$420,000
Bedrooms	6
Bathrooms	2.00
Full Baths	2
Square Footage	1,383
Acres	0.20
Year Built	1974
Type	Residential
Sub-Type	Detached
Style	Bi-Level
Status	Active

Community Information

Address	14 Rasmussen Place
Subdivision	NONE
City	Standard
County	Wheatland County
Province	Alberta
Postal Code	T0J 3G0

Amenities

Parking Spaces	2
----------------	---



Parking	Double Garage Detached, Off Street
# of Garages	2

Interior

Interior Features	Ceiling Fan(s)
Appliances	Dishwasher, Garage Control(s), Gas Stove, Refrigerator, Window Coverings
Heating	Forced Air, Natural Gas
Cooling	None
Has Basement	Yes
Basement	Finished, Full

Exterior

Exterior Features	None
Lot Description	Back Yard, Cul-De-Sac, Treed
Roof	Asphalt Shingle
Construction	Wood Frame
Foundation	Poured Concrete

Additional Information

Date Listed	September 8th, 2025
Days on Market	2
Zoning	R1

Listing Details

Listing Office	RE/MAX Landan Real Estate
----------------	---------------------------

Data is supplied by Pillar 9â„¢ MLS® System. Pillar 9â„¢ is the owner of the copyright in its MLS® System. Data is deemed reliable but is not guaranteed accurate by Pillar 9â„¢. The trademarks MLS®, Multiple Listing Service® and the associated logos are owned by The Canadian Real Estate Association (CREA) and identify the quality of services provided by real estate professionals who are members of CREA. Used under license.