

\$14 - 120f, 120 Mayor Magrath Drive N, Lethbridge

MLS® #A2241935

\$14

0 Bedroom, 0.00 Bathroom,
Commercial on 0.50 Acres

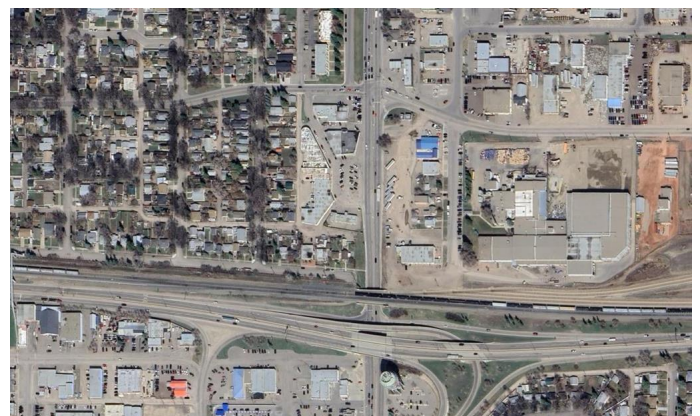
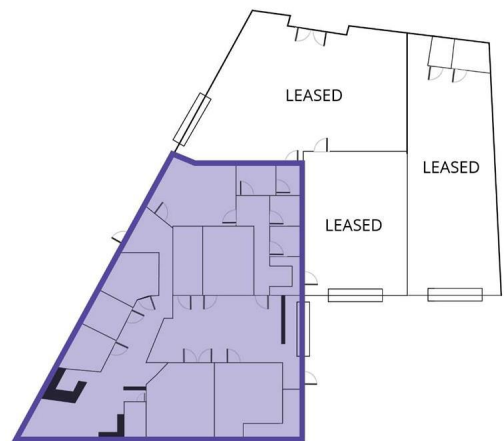
Westminster, Lethbridge, Alberta

Property Description

This unit features a flexible floor plan and an overhead door. The unit is in a central location and offers free parking. The space would be suitable for an office, retail or light industrial user. Affordable operating costs make this unit a great option. There is additional warehouse space available at this site (Unit 120I)

Location Description

The subject property is located at an easily accessible North Lethbridge location. There is excellent exposure from Mayor Magrath Drive North, a busy main roadway that sees 20,100 VPD+. Neighbouring businesses include NAPA Autopro, Petris Liquor Store, Coin Laundry, Songer Architecture, Talk Nerdy to Me, and Liquid Deals Inc.



Essential Information

MLS® #	A2241935
Price	\$14
Bathrooms	0.00
Acres	0.50
Type	Commercial
Sub-Type	Retail
Status	Active

Community Information

Address	120f, 120 Mayor Magrath Drive N
---------	---------------------------------

Subdivision	Westminster
City	Lethbridge
County	Lethbridge
Province	Alberta
Postal Code	T1H 3P4

Interior

Heating	Forced Air
Cooling	Central Air

Exterior

Lot Description	Back Lane
-----------------	-----------

Additional Information

Date Listed	July 21st, 2025
Days on Market	5
Zoning	C-G(W)

Listing Details

Listing Office	AVISON YOUNG
----------------	--------------

Data is supplied by Pillar 9â„¢ MLS® System. Pillar 9â„¢ is the owner of the copyright in its MLS® System. Data is deemed reliable but is not guaranteed accurate by Pillar 9â„¢. The trademarks MLS®, Multiple Listing Service® and the associated logos are owned by The Canadian Real Estate Association (CREA) and identify the quality of services provided by real estate professionals who are members of CREA. Used under license.