

# \$465,000 - 368 Rainbow Falls Drive, Chestermere

MLS® #A2241731

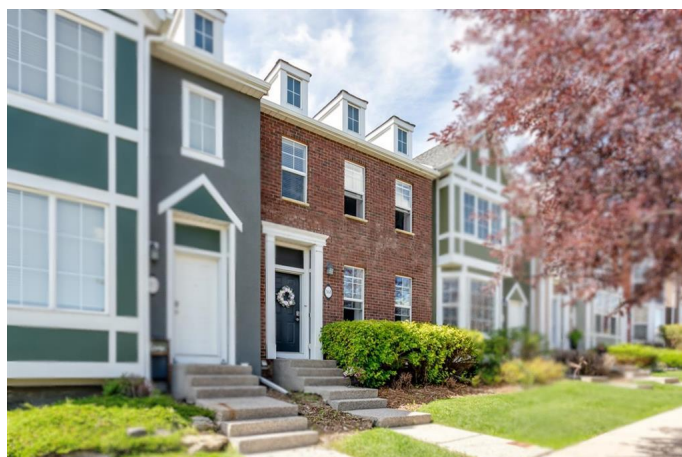
**\$465,000**

2 Bedroom, 4.00 Bathroom, 1,376 sqft

Residential on 0.00 Acres

Rainbow Falls, Chestermere, Alberta

Welcome to 368 Rainbow Falls Drive, a fully developed walkout townhome with coveted lake access, perfectly situated directly across from Rainbow Falls Park in the highly desirable Brownstones community. This extensively upgraded 2 bedroom, 4 bathroom home offers over 1,800 square feet of thoughtfully designed living space spread over three levels. The main floor showcases an open-concept layout that seamlessly blends comfort and functionality, with a spacious living room flowing into the dining area and a chef-inspired kitchen featuring a large island with generous storage, granite countertops, new stainless steel appliances, elegant diagonal maple hardwood flooring, and 9-foot ceilings. Oversized windows fill the space with natural light throughout the day. Step out from the kitchen onto a west-facing deck, ideal for enjoying morning coffee, year-round BBQs with the gas hookup, and beautiful mountain views and sunsets, all while enjoying added privacy from mature trees. A convenient 2-piece powder room is tucked just off the landing to the lower level. Upstairs, the dual primary suite layout offers flexibility and privacy, with the main suite featuring a luxurious 4-piece ensuite with a soaker tub, walk-in shower, and a spacious walk-in closet, while the second suite includes its own 4-piece ensuite. The fully finished walkout basement provides a large, versatile rec room perfect for relaxing, a home office, or a gym, and also includes a 3-piece bathroom, laundry room,



and access to the private lower patio and double detached garage. Recent upgrades include a new washer, dryer, and hot water tank. Additional features include central air conditioning, central vacuum, built-in surround sound with volume control, and ample street parking at both the front and rear. The location offers convenient access to scenic pathways, waterfalls, local parks, schools, and amenities, with quick connections to Highways 1, 2, and Stoney Trail. Residents also enjoy the lifestyle benefits of Lake Chestermere—a 750-acre lake fed by the Bow River—perfect for swimming, boating, fishing, and skating throughout the year. This quiet, well-managed complex is known for its welcoming community, beautifully maintained grounds, and low condo fees. Built by award-winning Lionsworthe Homes, this townhome offers quality, comfort, and convenience—schedule your showing today.

Built in 2010

**Essential Information**

MLS® #	A2241731
Price	\$465,000
Bedrooms	2
Bathrooms	4.00
Full Baths	3
Half Baths	1
Square Footage	1,376
Acres	0.00
Year Built	2010
Type	Residential
Sub-Type	Row/Townhouse
Style	2 Storey
Status	Active

**Community Information**

Address	368 Rainbow Falls Drive
---------	-------------------------

Subdivision	Rainbow Falls
City	Chestermere
County	Chestermere
Province	Alberta
Postal Code	T1X 0L8

### Amenities

Amenities	Other
Parking Spaces	2
Parking	Double Garage Detached
# of Garages	2

### Interior

Interior Features	Central Vacuum, Closet Organizers, Granite Counters, High Ceilings, Open Floorplan, Walk-In Closet(s)
Appliances	Dishwasher, Dryer, Refrigerator, Stove(s), Washer
Heating	Forced Air
Cooling	Central Air
Has Basement	Yes
Basement	Finished, Full, Walk-Out

### Exterior

Exterior Features	Other
Lot Description	Back Lane, Landscaped, Lawn
Roof	Asphalt Shingle
Construction	Brick, Wood Frame
Foundation	Poured Concrete

### Additional Information

Date Listed	July 22nd, 2025
Days on Market	6
Zoning	R-3

### Listing Details

Listing Office	CIR Realty
----------------	------------

Data is supplied by Pillar 9â„¢ MLS® System. Pillar 9â„¢ is the owner of the copyright in its MLS® System. Data is deemed reliable but is not guaranteed accurate by Pillar 9â„¢. The trademarks MLS®, Multiple Listing Service® and the associated logos are owned by The Canadian Real Estate Association (CREA) and identify the quality of services provided by real estate professionals who are members of CREA. Used under license.