

# \$28,000 - 345 2 Street W, Duchess

MLS® #A2240838

**\$28,000**

0 Bedroom, 0.00 Bathroom,  
Land on 0.16 Acres

NONE, Duchess, Alberta

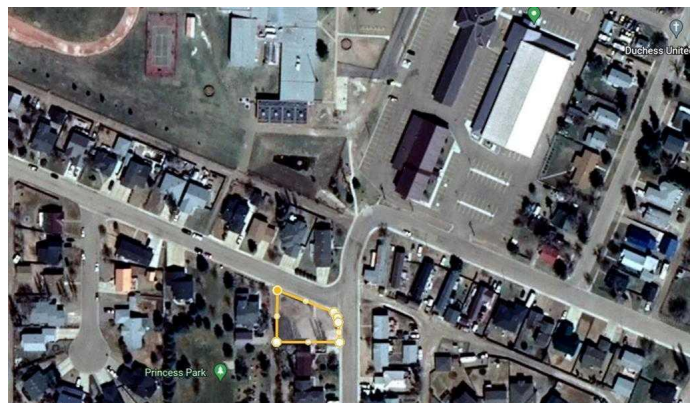
Build your dream home on this fantastic corner lot! One of the best communities in the County of Newell. One block from all the amenities, such as the K-12 school, beautiful Recreation Centre, Arena, and Curling Rink. Right out your back door is a private park with mature trees. Duchess also offers Campgrounds, Restaurants, conveniences such as a pharmacy, Hotel and the famous Duchess Station that serves up the biggest Ice Cream cone around! Take advantage of this rare opportunity!

## Essential Information

MLS® #	A2240838
Price	\$28,000
Bathrooms	0.00
Acres	0.16
Type	Land
Sub-Type	Residential Land
Status	Active

## Community Information

Address	345 2 Street W
Subdivision	NONE
City	Duchess
County	Newell, County of
Province	Alberta
Postal Code	T0J0Z0



**Exterior**

Lot Description      Back Lane, Back Yard

**Additional Information**

Date Listed              July 17th, 2025  
Days on Market        1  
Zoning                    Res

**Listing Details**

Listing Office            Century 21 Foothills Real Estate

Data is supplied by Pillar 9â„¢ MLS® System. Pillar 9â„¢ is the owner of the copyright in its MLS® System. Data is deemed reliable but is not guaranteed accurate by Pillar 9â„¢. The trademarks MLS®, Multiple Listing Service® and the associated logos are owned by The Canadian Real Estate Association (CREA) and identify the quality of services provided by real estate professionals who are members of CREA. Used under license.