

# \$799,900 - 316 Belvedere Drive Se, Calgary

MLS® #A2239421

**\$799,900**

4 Bedroom, 4.00 Bathroom, 2,057 sqft

Residential on 0.08 Acres

Belvedere., Calgary, Alberta

This single family home with over 2800 SQFT of developed living space with legal suite. This house has much to offer to start your growing family and create memories. Close to all amenities within walking distance to east hill commercial plaza and easy access to stony trail. This stunning home features double front attached garage with a total of 4 good size bedrooms, 3.5 baths and open to below living area with a 9 feet ceiling on main floor.

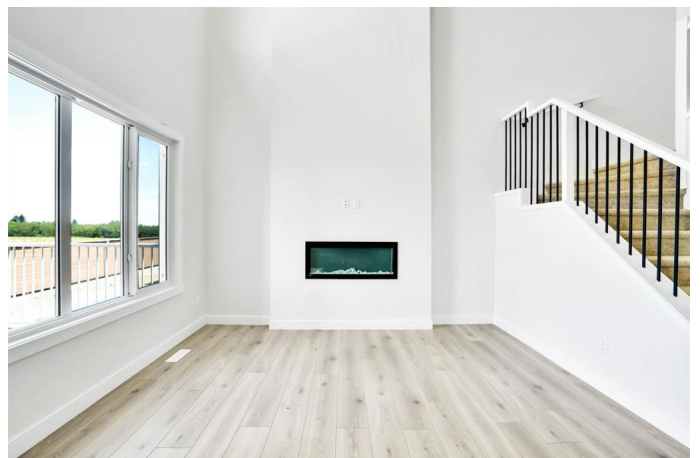
Built in 2025

## Essential Information

MLS® #	A2239421
Price	\$799,900
Bedrooms	4
Bathrooms	4.00
Full Baths	3
Half Baths	1
Square Footage	2,057
Acres	0.08
Year Built	2025
Type	Residential
Sub-Type	Detached
Style	2 Storey
Status	Active

## Community Information

Address 316 Belvedere Drive Se



Subdivision	Belvedere.
City	Calgary
County	Calgary
Province	Alberta
Postal Code	T2A 7Y2

### Amenities

Parking Spaces	4
Parking	Double Garage Attached
# of Garages	2

### Interior

Interior Features	See Remarks
Appliances	Dishwasher, Electric Range, Microwave, Refrigerator
Heating	Forced Air, Natural Gas
Cooling	Central Air
Fireplace	Yes
# of Fireplaces	1
Fireplaces	Electric
Has Basement	Yes
Basement	Exterior Entry, Finished, Full, Suite

### Exterior

Exterior Features	None
Lot Description	City Lot
Roof	Asphalt Shingle
Construction	Stone, Vinyl Siding
Foundation	Poured Concrete

### Additional Information

Date Listed	July 13th, 2025
Days on Market	3
Zoning	R-G

### Listing Details

Listing Office	URBAN-REALTY.ca
----------------	-----------------

Data is supplied by Pillar 9â„¢ MLS® System. Pillar 9â„¢ is the owner of the copyright in its MLS® System. Data is deemed reliable but is not guaranteed accurate by Pillar 9â„¢. The trademarks MLS®, Multiple Listing Service® and the associated logos are owned by The Canadian Real Estate Association (CREA) and identify the quality of services provided by real estate professionals who are members of CREA. Used under license.