

\$229,900 - 645 16 Street N, Lethbridge

MLS® #A2239411

\$229,900

2 Bedroom, 1.00 Bathroom, 901 sqft
Residential on 0.15 Acres

Winston Churchill, Lethbridge, Alberta

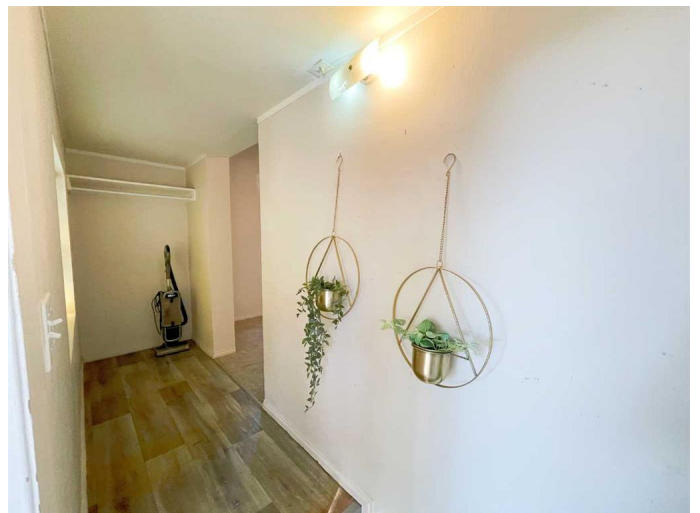
Tucked away on a charming, tree-lined street, this cozy north-side one-bedroom home is full of warmth and character. With a double lot, there's plenty of room to enjoy the outdoors, whether for gardening, relaxing, or future projects like a garage. Thoughtful updates inside and out make this home move-in ready, while the second-level loft adds extra space for a home office, den, or storage. It's the kind of place that just feels like home. A new hot water tank just installed. Take a drive by, soak in its inviting curb appeal, and step inside to see how comfortable and welcoming it truly is!

Built in 1905

Essential Information

MLS® #	A2239411
Price	\$229,900
Bedrooms	2
Bathrooms	1.00
Full Baths	1
Square Footage	901
Acres	0.15
Year Built	1905
Type	Residential
Sub-Type	Detached
Style	1 and Half Storey
Status	Active

Community Information



Address	645 16 Street N
Subdivision	Winston Churchill
City	Lethbridge
County	Lethbridge
Province	Alberta
Postal Code	T1H 3B1

Amenities

Parking Spaces	3
Parking	Single Garage Detached
# of Garages	1

Interior

Interior Features	Ceiling Fan(s)
Appliances	Refrigerator, Stove(s), Washer/Dryer
Heating	Forced Air
Cooling	None
Has Basement	Yes
Basement	Crawl Space, Partial

Exterior

Exterior Features	Private Entrance, Private Yard
Lot Description	Rectangular Lot
Roof	Asphalt Shingle
Construction	Vinyl Siding
Foundation	See Remarks

Additional Information

Date Listed	July 13th, 2025
Days on Market	62
Zoning	R-L(W)

Listing Details

Listing Office	Maxwell Devonshire Realty
----------------	---------------------------

Data is supplied by Pillar 9â„¢ MLS® System. Pillar 9â„¢ is the owner of the copyright in its MLS® System. Data is deemed reliable but is not guaranteed accurate by Pillar 9â„¢. The trademarks MLS®, Multiple Listing Service® and the associated logos are owned by The Canadian Real Estate Association (CREA) and identify the quality of services provided by real estate professionals who are members of CREA. Used under license.