

\$485,000 - 136 Oswald Close, Red Deer

MLS® #A2238834

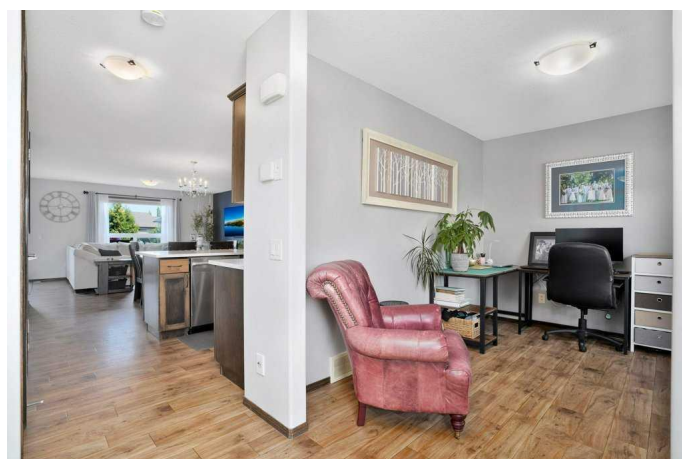
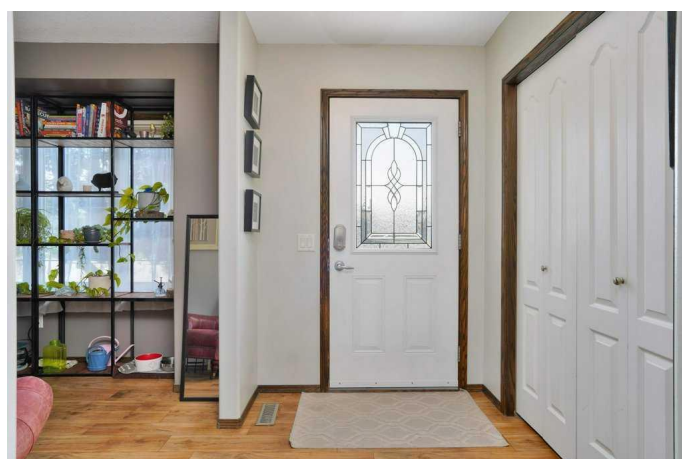
\$485,000

4 Bedroom, 4.00 Bathroom, 1,475 sqft

Residential on 0.12 Acres

Oriole Park West, Red Deer, Alberta

For the buyer looking for a beautiful fully developed 2 storey 4 bedroom home on a large pie lot with a double detached garage, 136 Oswald Close checks all the boxes!! A welcoming front foyer connects to a bright and spacious main floor front office - absolutely ideal for working at home or a great spot to relax with a good book. The open concept main floor is designed with today's living in mind - the well appointed kitchen features quartz countertops, a center island, stainless appliances, maple cabinets, a corner pantry and subway tile backsplash. You won't be left out of the conversation with a nicely connected dining area and bright living room - an ideal space for the entire family to connect and enjoy! There is a 2pce bath on the main level, and the rear patio door leads to the large 2 tiered deck and big pie lot with a private paver stone fire pit area, storage shed, and detached garage - there is plenty of space for kids and pets!! The upper level offers a full 4pce bath and 3 nice sized bedrooms with newer carpet. The large master bedroom has a walk-in closet and lovely renovated ensuite with a walk-in shower and custom tile work!! The basement is fully finished with vinyl plank flooring, a 4th bedroom, full bath, and rec room! Other notable features of this fine home include central A/C, appliances are all about 5 years old including the washer & dryer. The hot water tank and garage door have also been replaced in the last 5 years and new shingles were installed in 2014. This terrific family home



is move in ready and perfect for families!!

Built in 2007

Essential Information

MLS® #	A2238834
Price	\$485,000
Bedrooms	4
Bathrooms	4.00
Full Baths	3
Half Baths	1
Square Footage	1,475
Acres	0.12
Year Built	2007
Type	Residential
Sub-Type	Detached
Style	2 Storey
Status	Active

Community Information

Address	136 Oswald Close
Subdivision	Oriole Park West
City	Red Deer
County	Red Deer
Province	Alberta
Postal Code	T4P 0C1

Amenities

Parking Spaces	2
Parking	Double Garage Detached, Garage Door Opener, Garage Faces Rear, Heated Garage
# of Garages	2

Interior

Interior Features	Breakfast Bar, Kitchen Island, Open Floorplan, Pantry, Quartz Counters, Vinyl Windows, Walk-In Closet(s)
Appliances	Central Air Conditioner, Dishwasher, Dryer, Garage Control(s), Gas Stove, Microwave, Refrigerator, Washer, Window Coverings
Heating	Forced Air, Natural Gas

Cooling	Central Air
Has Basement	Yes
Basement	Finished, Full

Exterior

Exterior Features	Storage
Lot Description	Back Lane, Cul-De-Sac, Landscaped, Pie Shaped Lot
Roof	Shingle
Construction	Concrete, Vinyl Siding, Wood Frame
Foundation	Poured Concrete

Additional Information

Date Listed	July 13th, 2025
Days on Market	5
Zoning	R-N

Listing Details

Listing Office	RE/MAX real estate central alberta
----------------	------------------------------------

Data is supplied by Pillar 9â„¢ MLS® System. Pillar 9â„¢ is the owner of the copyright in its MLS® System. Data is deemed reliable but is not guaranteed accurate by Pillar 9â„¢. The trademarks MLS®, Multiple Listing Service® and the associated logos are owned by The Canadian Real Estate Association (CREA) and identify the quality of services provided by real estate professionals who are members of CREA. Used under license.