

\$139,900 - 95, 41019 Range Road 11, Rural Lacombe County

MLS® #A2238060

\$139,900

0 Bedroom, 0.00 Bathroom,
Land on 0.09 Acres

Sandy Point, Rural Lacombe County, Alberta

Year round living a pretty Sandy Point!
This beautifully landscaped, developed lot
offers room to enjoy and some privacy for cozy
campfires!

The partially treed lot has the perfect space for
your RV with a 30' finished, partially covered
deck. This sought after location offers an
asphalt parking pad for 2 vehicles as well as a
large gravel pad for your boat or parking for
extra guests.

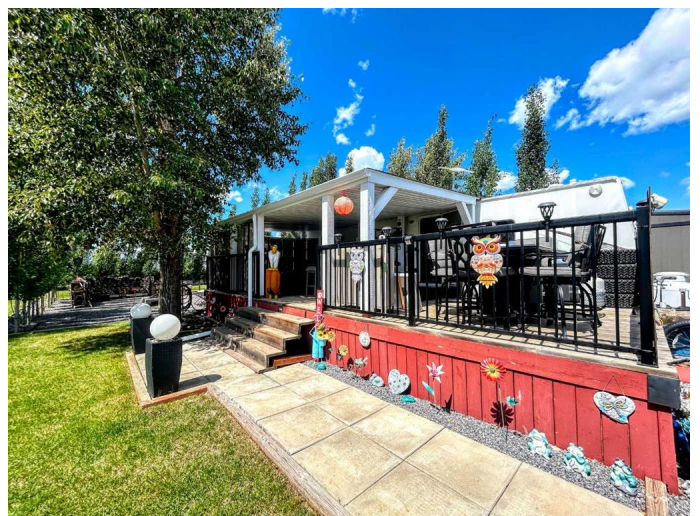
Situated in well established phase 2, this
LARGE CORNER LOT has been developed
over the years with mature trees, plush grass
and plenty of outdoor living space and room
for YOUR RV.

Tucked at the rear of the lot and surrounded
by trees is your private gathering space
complete with a graveled seating area
centered by a large fire pit! Slightly shaded
from the hot afternoon sun, this is THE space
to rest and relax.

There is a fully finished, insulated 10'x15' shed
for all your storage needs.

Low fees include sewer & water, common area
maintenance and contributions to the reserve
fund.

Relaxation starts HERE!



Essential Information

MLS® # A2238060

Price	\$139,900
Bathrooms	0.00
Acres	0.09
Type	Land
Sub-Type	Residential Land
Status	Active

Community Information

Address	95, 41019 Range Road 11
Subdivision	Sandy Point
City	Rural Lacombe County
County	Lacombe County
Province	Alberta
Postal Code	T0C0J1

Amenities

Amenities	Playground, Beach Access, Boating, Coin Laundry, Picnic Area, RV/Boat Storage
-----------	---

Exterior

Lot Description	Landscaped, Lawn, Near Golf Course
-----------------	------------------------------------

Additional Information

Date Listed	July 9th, 2025
Days on Market	10
Zoning	R-RVR

Listing Details

Listing Office	Royal LePage Network Realty Corp.
----------------	-----------------------------------

Data is supplied by Pillar 9â„¢ MLSÂ® System. Pillar 9â„¢ is the owner of the copyright in its MLSÂ® System. Data is deemed reliable but is not guaranteed accurate by Pillar 9â„¢. The trademarks MLSÂ®, Multiple Listing ServiceÂ® and the associated logos are owned by The Canadian Real Estate Association (CREA) and identify the quality of services provided by real estate professionals who are members of CREA. Used under license.