

# \$348,500 - 150 Simpson Crescent Se, Medicine Hat

MLS® #A2237931

## \$348,500

4 Bedroom, 2.00 Bathroom, 1,012 sqft

Residential on 0.10 Acres

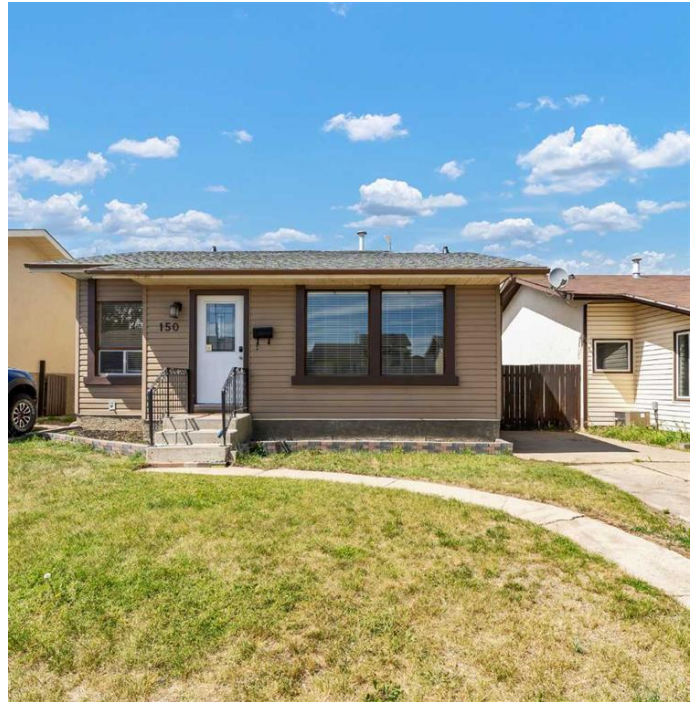
SE Southridge, Medicine Hat, Alberta

THIS FULLY DEVELOPED BUNGALOW WITH 4 (3+1) BEDROOMS 2 BATHS, WITH A 24X24 DETACHED HEATED GARAGE IS AN EXCELLENT FAMILY HOME AND IS CLOSE TO SCHOOLS, COLLEGE, PARKS AND WALKING/BIKING TRAILS! Freshly painted, the main floor features 3 bedrooms, 4 piece bath and a spacious living room. The kitchen has a very functional layout and the dining area has lots of room for gatherings, plus a door to the deck with gasline to BBQ. Downstairs is the large family room, an additional bedroom with a walk in closet (bsmt bdm window needs to be made egress to be legal bdrm), 3 pc bath and huge utility/laundry room. NEW SHINGLES THIS YEAR IN MAY 2025, & HWT in 2018. The backyard is fully fenced, and the 24x24 insulated, heated garage is just steps away from the back deck :) \*\*PLEASE NOTE the garage floors had JUST been washed, so they are still wet in the photos. Call today!

Built in 1979

## Essential Information

MLS® #	A2237931
Price	\$348,500
Bedrooms	4
Bathrooms	2.00
Full Baths	2
Square Footage	1,012



Acres	0.10
Year Built	1979
Type	Residential
Sub-Type	Detached
Style	Bungalow
Status	Active

### Community Information

Address	150 Simpson Crescent Se
Subdivision	SE Southridge
City	Medicine Hat
County	Medicine Hat
Province	Alberta
Postal Code	T1B2R9

### Amenities

Parking Spaces	3
Parking	Double Garage Detached, Garage Faces Rear, Heated Garage, Insulated
# of Garages	2

### Interior

Interior Features	No Smoking Home, Sump Pump(s)
Appliances	Central Air Conditioner, Dishwasher, Electric Stove, Refrigerator, Washer/Dryer
Heating	Forced Air, Natural Gas
Cooling	Central Air
Has Basement	Yes
Basement	Finished, Full

### Exterior

Exterior Features	Other
Lot Description	Back Lane, Landscaped
Roof	Asphalt Shingle
Construction	Vinyl Siding
Foundation	Poured Concrete

### Additional Information

Date Listed	July 8th, 2025
-------------	----------------

Days on Market19

ZoningR-LD

Listing Details

Listing OfficeROYAL LEPAGE COMMUNITY



Data is supplied by Pillar 9â„¸ MLSÂ® System. Pillar 9â„¸ is the owner of the copyright in its MLSÂ® System. Data is deemed reliable but is not guaranteed accurate by Pillar 9â„¸. The trademarks MLSÂ®, Multiple Listing ServiceÂ® and the associated logos are owned by The Canadian Real Estate Association (CREA) and identify the quality of services provided by real estate professionals who are members of CREA. Used under license.