

\$237,500 - 2825 12 Avenue, Wainwright

MLS® #A2236678

\$237,500

2 Bedroom, 1.00 Bathroom, 1,012 sqft

Residential on 0.10 Acres

NONE, Wainwright, Alberta

This 2 bedroom bungalow townhouse has plenty to offer. Located close to shopping and other amenities, it is great for first time buyers, and empty nesters alike. The yard is fenced, and landscaped with a deck off kitchen. There is an attached garage with access to inside the home from garage. The interior features an open concept living area with a four piece bath, ample cabinets in kitchen, dining area, two large bedrooms, living room & main floor laundry . Basement area is undeveloped and ready for you to customize to your liking.

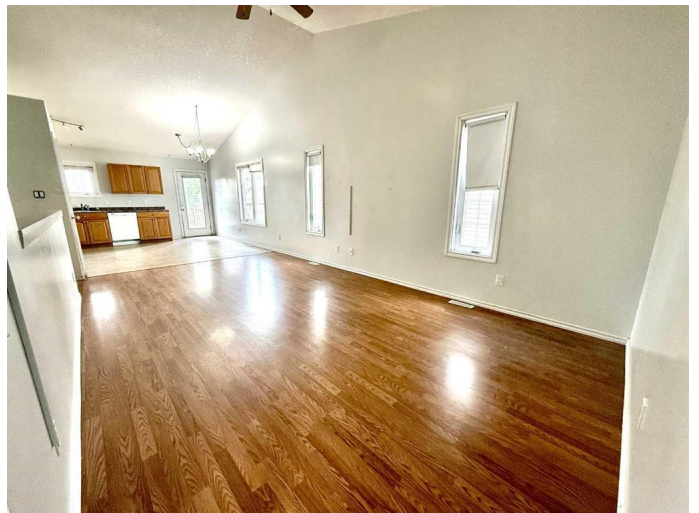
Built in 2008

Essential Information

MLS® #	A2236678
Price	\$237,500
Bedrooms	2
Bathrooms	1.00
Full Baths	1
Square Footage	1,012
Acres	0.10
Year Built	2008
Type	Residential
Sub-Type	Row/Townhouse
Style	Bungalow
Status	Active

Community Information

Address 2825 12 Avenue



Subdivision	NONE
City	Wainwright
County	Wainwright No. 61, M.D. of
Province	Alberta
Postal Code	T9W 0A9

Amenities

Parking Spaces	2
Parking	Single Garage Attached
# of Garages	1

Interior

Interior Features	Open Floorplan
Appliances	Dishwasher, Dryer, Electric Range, Refrigerator, Washer
Heating	Forced Air, Natural Gas
Cooling	None
Has Basement	Yes
Basement	Full, Unfinished

Exterior

Exterior Features	Private Yard
Lot Description	Back Yard
Roof	Asphalt Shingle
Construction	Vinyl Siding
Foundation	ICF Block

Additional Information

Date Listed	July 3rd, 2025
Days on Market	70
Zoning	R3

Listing Details

Listing Office	COLDWELLBANKER HOMETOWN REALTY
----------------	--------------------------------

Data is supplied by Pillar 9â„¢ MLS® System. Pillar 9â„¢ is the owner of the copyright in its MLS® System. Data is deemed reliable but is not guaranteed accurate by Pillar 9â„¢. The trademarks MLS®, Multiple Listing Service® and the associated logos are owned by The Canadian Real Estate Association (CREA) and identify the quality of services provided by real estate professionals who are members of CREA. Used under license.