

\$245,000 - 212, 7110 80 Avenue Ne, Calgary

MLS® #A2235574

\$245,000

2 Bedroom, 1.00 Bathroom, 572 sqft

Residential on 0.00 Acres

Saddle Ridge, Calgary, Alberta

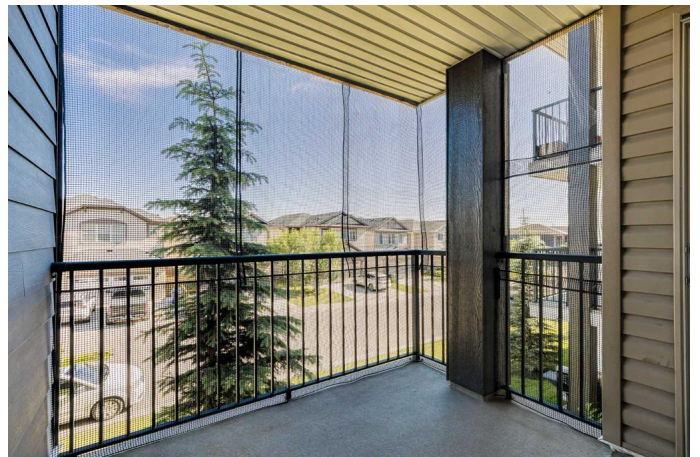
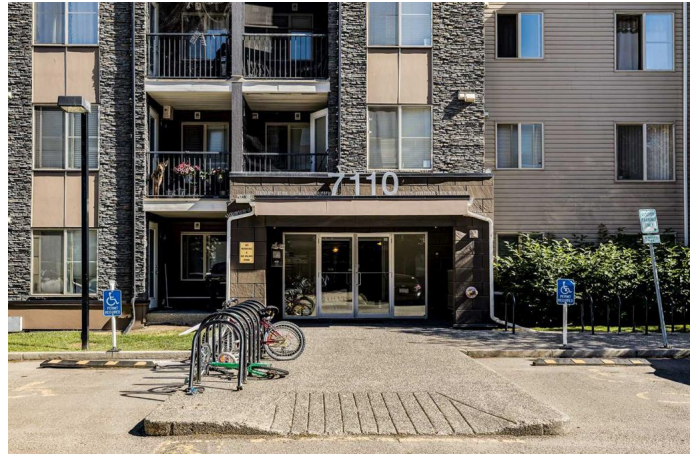
Welcome to #212 – 7110 80 Ave NE!

Looking for a great rental or investment opportunity with LOW CONDO FEE? This 2-bedroom, 1-bathroom unit offers incredible value with stylish Luxury Vinyl Plank flooring and a functional, open-concept layout that comfortably accommodates a small family or roommates. Enjoy a bright kitchen that flows into a generous living and dining area—perfect for relaxing or entertaining. Both bedrooms are well-sized, ideal for a home office or guest space. Located in a well-maintained building with a great rental return, and close to shopping, schools, parks, and transit, this is a great opportunity to own in a vibrant and growing community at an accessible price point. Don't miss out—book your showing today!

Built in 2013

Essential Information

MLS® #	A2235574
Price	\$245,000
Bedrooms	2
Bathrooms	1.00
Full Baths	1
Square Footage	572
Acres	0.00
Year Built	2013
Type	Residential



Sub-Type	Apartment
Style	Single Level Unit
Status	Active

Community Information

Address	212, 7110 80 Avenue Ne
Subdivision	Saddle Ridge
City	Calgary
County	Calgary
Province	Alberta
Postal Code	T3J 0N4

Amenities

Amenities	None
Parking Spaces	1
Parking	Stall

Interior

Interior Features	Ceiling Fan(s), No Animal Home, Open Floorplan
Appliances	Dishwasher, Electric Range, Microwave, Refrigerator, Washer/Dryer Stacked
Heating	Baseboard
Cooling	None
# of Stories	4

Exterior

Exterior Features	Balcony
Roof	Asphalt Shingle
Construction	Stone, Vinyl Siding, Wood Frame

Additional Information

Date Listed	July 3rd, 2025
Days on Market	14
Zoning	M-2

Listing Details

Listing Office	eXp Realty
----------------	------------

Data is supplied by Pillar 9â„¢ MLS® System. Pillar 9â„¢ is the owner of the copyright in its MLS® System. Data is deemed reliable but is not guaranteed accurate by Pillar 9â„¢. The trademarks MLS®, Multiple Listing Service® and the associated logos are owned by The Canadian Real Estate Association (CREA) and identify the quality of services

provided by real estate professionals who are members of CREA. Used under license.