

# \$15 - 130, 4410 52 Avenue, Lloydminster

MLS® #A2235297

**\$15**

0 Bedroom, 0.00 Bathroom,  
Commercial on 0.00 Acres

NONE, Lloydminster, Alberta

A great business opportunity! Highly visible  
4,800 square feet of lease space in Plaza 44!  
Perfect spot for a pub or a restaurant with  
plenty of parking and a high traffic location just  
off of HWY 16!

Built in 1987

## Essential Information

MLS® #	A2235297
Price	\$15
Bathrooms	0.00
Acres	0.00
Year Built	1987
Type	Commercial
Sub-Type	Retail
Status	Active

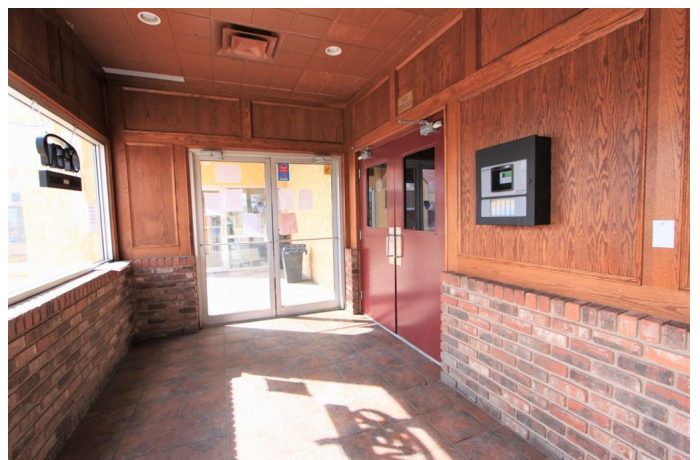
## Community Information

Address	130, 4410 52 Avenue
Subdivision	NONE
City	Lloydminster
County	Lloydminster
Province	Alberta
Postal Code	T9V 1T4

## Interior

Heating	Varies by Unit
Cooling	Central Air

## Exterior



Lot Description	City Lot, Street Lighting, Near Shopping Center, Paved
Construction	Wood Frame
Foundation	Wood

**Additional Information**

Date Listed	June 27th, 2025
Days on Market	76
Zoning	C2

**Listing Details**

Listing Office	COLDWELL BANKER - CITY SIDE REALTY
----------------	------------------------------------

Data is supplied by Pillar 9â„¢ MLSÂ® System. Pillar 9â„¢ is the owner of the copyright in its MLSÂ® System. Data is deemed reliable but is not guaranteed accurate by Pillar 9â„¢. The trademarks MLSÂ®, Multiple Listing ServiceÂ® and the associated logos are owned by The Canadian Real Estate Association (CREA) and identify the quality of services provided by real estate professionals who are members of CREA. Used under license.