

\$398,893 - 112 Doovertree Place Se, Calgary

MLS® #A2234912

\$398,893

4 Bedroom, 2.00 Bathroom, 940 sqft

Residential on 0.07 Acres

Dover, Calgary, Alberta

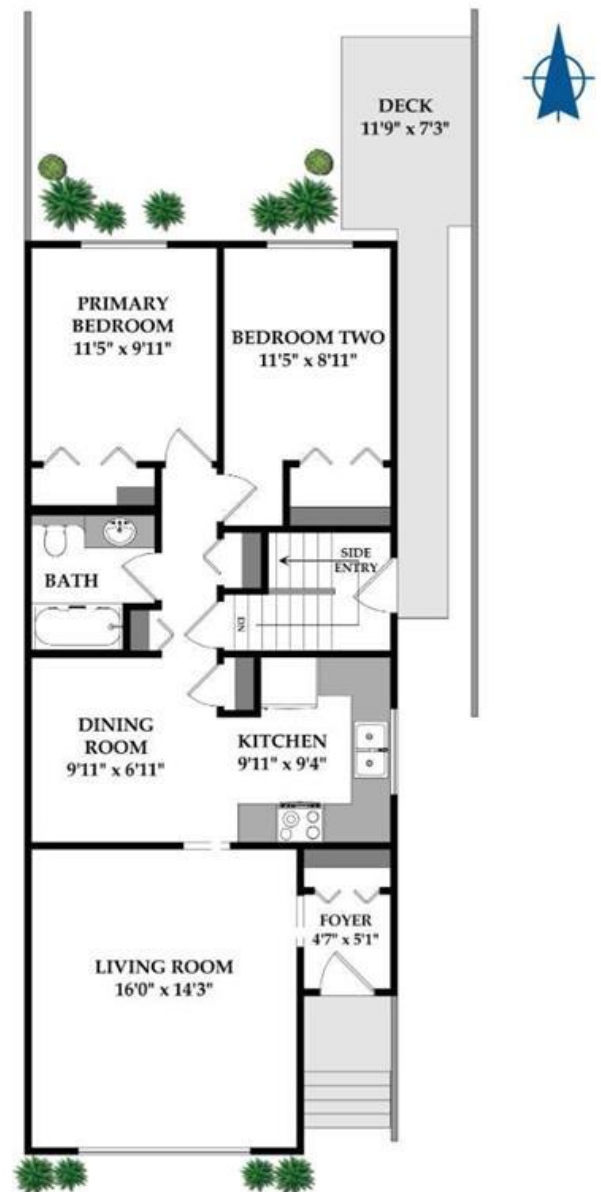
112 Doovertree Place SE | Nestled On A Quiet Street In The Community Of Dover, This Semi-Detached Bungalow Home Offers 2-Bedrooms & 1-Bath On Main Floor, Plus A Developed Basement, Kitchenette, 2-Bedrooms & A 4 PCE Bathroom & Additional Living Space | Great Value Close To Downtown Calgary | Located On A Quiet Street With Easy Access To Transit, Schools, Parks, & Major Routes Like Deerfoot Trail & 17 Avenue | No Interior Photos As Tenant Occupied | Currently Rented To One Tenant (Up & Down).

Built in 1975

Essential Information

MLS® #	A2234912
Price	\$398,893
Bedrooms	4
Bathrooms	2.00
Full Baths	2
Square Footage	940
Acres	0.07
Year Built	1975
Type	Residential
Sub-Type	Semi Detached
Style	Side by Side, Bungalow
Status	Active

Community Information



Address	112 Dovertree Place Se
Subdivision	Dover
City	Calgary
County	Calgary
Province	Alberta
Postal Code	T3H 5B1

Amenities

Parking Spaces	2
Parking	Alley Access, Parking Pad

Interior

Interior Features	See Remarks, Separate Entrance
Appliances	Dishwasher, Electric Stove, Range Hood, Refrigerator
Heating	Forced Air, Natural Gas
Cooling	None
Has Basement	Yes
Basement	Finished, Full

Exterior

Exterior Features	Private Yard
Lot Description	Back Lane, Back Yard, Front Yard, Lawn, Rectangular Lot
Roof	Asphalt Shingle
Construction	Concrete, Wood Frame, Wood Siding
Foundation	Poured Concrete

Additional Information

Date Listed	June 26th, 2025
Days on Market	34
Zoning	R-CG

Listing Details

Listing Office	Real Broker
----------------	-------------

Data is supplied by Pillar 9â„¢ MLS® System. Pillar 9â„¢ is the owner of the copyright in its MLS® System. Data is deemed reliable but is not guaranteed accurate by Pillar 9â„¢. The trademarks MLS®, Multiple Listing Service® and the associated logos are owned by The Canadian Real Estate Association (CREA) and identify the quality of services provided by real estate professionals who are members of CREA. Used under license.