

\$230,000 - Ne-1-55-12 Yellowhead County, Rural Yellowhead County

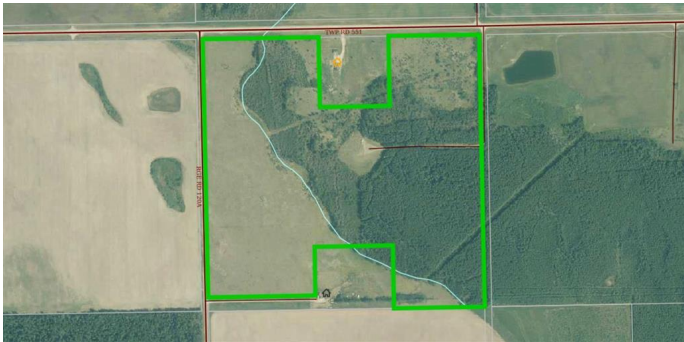
MLS® #A2234720

\$230,000

0 Bedroom, 0.00 Bathroom,
Land on 129.07 Acres

NONE, Rural Yellowhead County, Alberta

129.07 acres with \$4,500.00 annual surface
well revenue. Paved all the way from Edson.



Essential Information

MLS® #	A2234720
Price	\$230,000
Bathrooms	0.00
Acres	129.07
Type	Land
Sub-Type	Residential Land
Status	Active

Community Information

Address	Ne-1-55-12 Yellowhead County
Subdivision	NONE
City	Rural Yellowhead County
County	Yellowhead County
Province	Alberta
Postal Code	T7E 5C4

Amenities

Utilities	None
-----------	------

Additional Information

Date Listed	June 26th, 2025
Days on Market	18
Zoning	RD

Listing Details

Listing Office RE/MAX BOXSHAW FOUR REALTY

Data is supplied by Pillar 9â„¢ MLS® System. Pillar 9â„¢ is the owner of the copyright in its MLS® System. Data is deemed reliable but is not guaranteed accurate by Pillar 9â„¢. The trademarks MLS®, Multiple Listing Service® and the associated logos are owned by The Canadian Real Estate Association (CREA) and identify the quality of services provided by real estate professionals who are members of CREA. Used under license.