

\$43,900 - 221054 670 Township, Rural Athabasca County

MLS® #A2234230

\$43,900

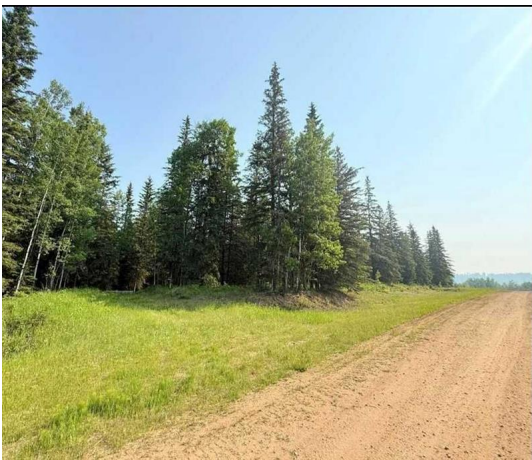
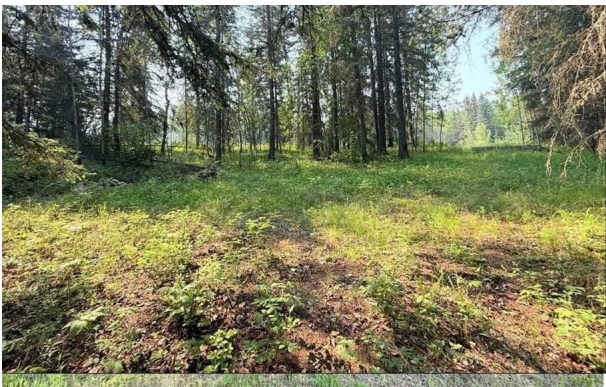
0 Bedroom, 0.00 Bathroom,
Land on 1.08 Acres

NONE, Rural Athabasca County, Alberta

Whether you're envisioning a quiet weekend escape or planning to build your dream home, this 1.08-acre parcel offers the ideal combination of space, privacy, and natural surroundings. Nestled just a short walk from the scenic Athabasca River, this property is also only minutes away by quad from nearby crown land and close to the renowned 18-hole Athabasca Golf & Country Club, as well as excellent fishing and boating opportunities. Located just 1.5 hours from Edmonton, this lot offers a rare chance to enjoy nature without sacrificing convenience.

One of the finest and most unique lots in the subdivision, due to being one of the only lots with mostly mature spruce tree-covered landscape with a gently natural rolling hill. Plus, the wide approach with culvert, driveway and few tree openings already in place, saving you time, money and effort in the development process.

Don't miss your chance to own a piece of Alberta's natural beauty—come explore the potential today!



Essential Information

MLS® #	A2234230
Price	\$43,900
Bathrooms	0.00
Acres	1.08

Type	Land
Sub-Type	Residential Land
Status	Active

Community Information

Address	221054 670 Township
Subdivision	NONE
City	Rural Athabasca County
County	Athabasca County
Province	Alberta
Postal Code	T9S 2B5

Additional Information

Date Listed	July 2nd, 2025
Days on Market	16
Zoning	CR1

Listing Details

Listing Office	Honestdoor Inc.
----------------	-----------------

Data is supplied by Pillar 9â„¢ MLS® System. Pillar 9â„¢ is the owner of the copyright in its MLS® System. Data is deemed reliable but is not guaranteed accurate by Pillar 9â„¢. The trademarks MLS®, Multiple Listing Service® and the associated logos are owned by The Canadian Real Estate Association (CREA) and identify the quality of services provided by real estate professionals who are members of CREA. Used under license.