

\$585,000 - 5407 14 Avenue Se, Calgary

MLS® #A2232945

\$585,000

5 Bedroom, 2.00 Bathroom, 1,067 sqft
Residential on 0.14 Acres

Penbrooke Meadows, Calgary, Alberta

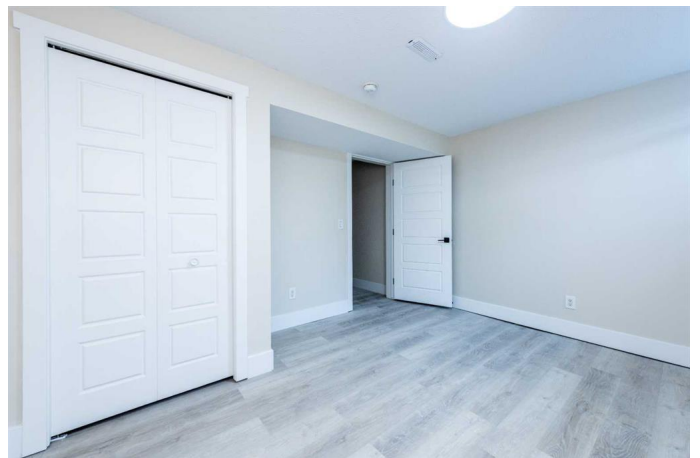
Public Remarks: This 1,066 sq ft home offers three bedrooms and a full bathroom on the main level, along with a kitchen featuring new cabinets, brand new quartz countertops, vinyl flooring and brand new windows upstairs, a living room, and a dining room. The basement includes an LEGAL SUITE with a kitchen, living area, two bedrooms, and another full bathroom. Laundry is in the utility room. Situated on a 51' x 120' lot, the property is close to shops, amenities on International Avenue, and public transit.

Built in 1960

Essential Information

MLS® #	A2232945
Price	\$585,000
Bedrooms	5
Bathrooms	2.00
Full Baths	2
Square Footage	1,067
Acres	0.14
Year Built	1960
Type	Residential
Sub-Type	Detached
Style	Bungalow
Status	Active

Community Information



Address	5407 14 Avenue Se
Subdivision	Penbrooke Meadows
City	Calgary
County	Calgary
Province	Alberta
Postal Code	t2a 0l4

Amenities

Parking Spaces	3
Parking	Off Street

Interior

Interior Features	Vinyl Windows
Appliances	Stove(s), Washer/Dryer
Heating	Forced Air
Cooling	None
Has Basement	Yes
Basement	Exterior Entry, Finished, Full, Suite

Exterior

Exterior Features	Private Entrance, Private Yard
Lot Description	Back Yard
Roof	Asphalt Shingle
Construction	Concrete
Foundation	Poured Concrete

Additional Information

Date Listed	June 19th, 2025
Days on Market	41
Zoning	R-CG

Listing Details

Listing Office	First Place Realty
----------------	--------------------

Data is supplied by Pillar 9â„¢ MLS® System. Pillar 9â„¢ is the owner of the copyright in its MLS® System. Data is deemed reliable but is not guaranteed accurate by Pillar 9â„¢. The trademarks MLS®, Multiple Listing Service® and the associated logos are owned by The Canadian Real Estate Association (CREA) and identify the quality of services provided by real estate professionals who are members of CREA. Used under license.