

# \$79,900 - 4514 49 Street, Lloydminster

MLS® #A2232297

**\$79,900**

1 Bedroom, 1.00 Bathroom, 550 sqft

Residential on 0.09 Acres

East Lloydminster, Lloydminster,  
Saskatchewan

Affordable Opportunity Across from E.S. Laird School

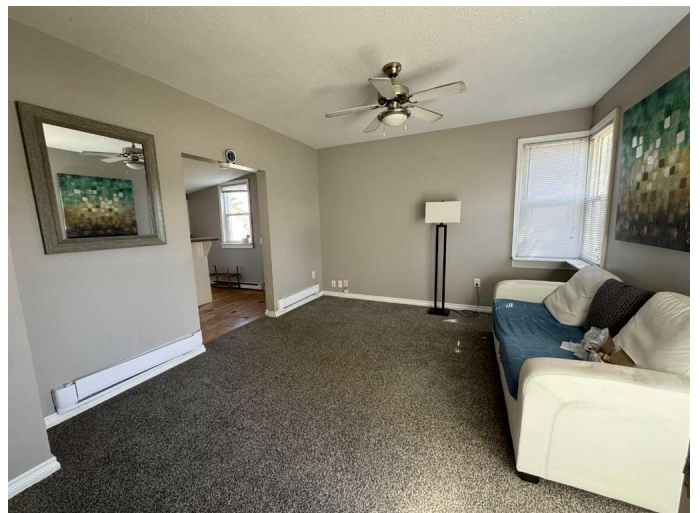
This cozy home sits on a beautiful treed lot with alley access, just steps from E.S. Laird School. It's the perfect opportunity for someone looking to get into the market or take on a project. Inside you'll find an open concept layout connecting the kitchen and living area, plus a spacious bathroom, main floor laundry, and one good-sized bedroom. With some TLC, this home could shine. The lot offers privacy and potential.

Built in 1949

## Essential Information

MLS® #	A2232297
Price	\$79,900
Bedrooms	1
Bathrooms	1.00
Full Baths	1
Square Footage	550
Acres	0.09
Year Built	1949
Type	Residential
Sub-Type	Detached
Style	Bungalow
Status	Active

## Community Information



Address	4514 49 Street
Subdivision	East Lloydminster
City	Lloydminster
County	Lloydminster
Province	Saskatchewan
Postal Code	S9V 0L5

### Amenities

Parking Spaces	2
Parking	Off Street

### Interior

Interior Features	Open Floorplan
Appliances	None
Heating	Forced Air
Cooling	None
Has Basement	Yes
Basement	Crawl Space, See Remarks

### Exterior

Exterior Features	None
Lot Description	Back Yard, Front Yard, Lawn, Back Lane
Roof	Asphalt Shingle
Construction	Wood Frame, Vinyl Siding
Foundation	Other

### Additional Information

Date Listed	June 26th, 2025
Days on Market	77
Zoning	R1

### Listing Details

Listing Office	eXp Realty (Lloyd)
----------------	--------------------

Data is supplied by Pillar 9â„¢ MLS® System. Pillar 9â„¢ is the owner of the copyright in its MLS® System. Data is deemed reliable but is not guaranteed accurate by Pillar 9â„¢. The trademarks MLS®, Multiple Listing Service® and the associated logos are owned by The Canadian Real Estate Association (CREA) and identify the quality of services provided by real estate professionals who are members of CREA. Used under license.