

\$250,000 - 17, 420069 Range Road 284, Rural Ponoka County

MLS® #A2232045

\$250,000

0 Bedroom, 0.00 Bathroom,
Land on 3.23 Acres

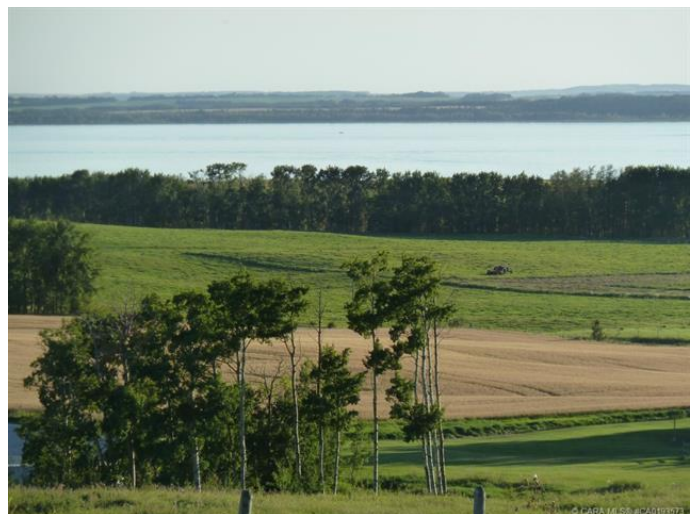
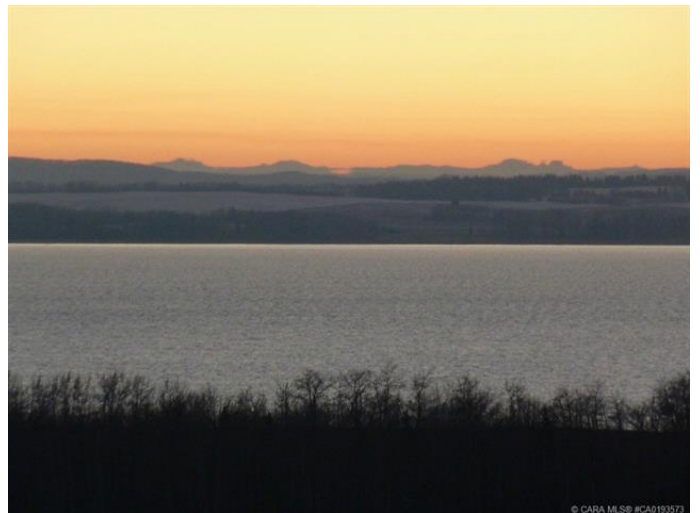
Grandview Estates, Rural Ponoka County,
Alberta

Lot 17 sits on top of the subdivision with one of the best overall views of the Lake. architecturally controlled subdivision that is intertwined amongst 30 acres of environmental reserve featuring established walking trails, abundant wildlife, local history. The view is so amazing that it is better described as an experience. Every lot boasts a spectacular view of the lake; some views encompass the entire length of Gull Lake. Imagine closing every single day with yet another uniquely pleasing sunset. . Boat access is 5 minutes away at the Raymond Shores public boat launch. Grandview Estates is a 31 lot acreage subdivision with acreages ranging from 1 to 6 acres in size and \$85,000 to \$275,000 in price. taxes not yet assessed.

Essential Information

MLS® #	A2232045
Price	\$250,000
Bathrooms	0.00
Acres	3.23
Type	Land
Sub-Type	Residential Land
Status	Active

Community Information



Address	17, 420069 Range Road 284
Subdivision	Grandview Estates
City	Rural Ponoka County
County	Ponoka County
Province	Alberta
Postal Code	T4J 1R3

Exterior

Lot Description	Near Golf Course, Street Lighting, Views
-----------------	--

Additional Information

Date Listed	June 17th, 2025
Days on Market	87
Zoning	CR

Listing Details

Listing Office	Royal LePage Lifestyles Realty
----------------	--------------------------------

Data is supplied by Pillar 9â„¢ MLS® System. Pillar 9â„¢ is the owner of the copyright in its MLS® System. Data is deemed reliable but is not guaranteed accurate by Pillar 9â„¢. The trademarks MLS®, Multiple Listing Service® and the associated logos are owned by The Canadian Real Estate Association (CREA) and identify the quality of services provided by real estate professionals who are members of CREA. Used under license.