

# \$225,000 - 1230 2 Avenue W, Drumheller

MLS® #A2231152

## \$225,000

3 Bedroom, 1.00 Bathroom, 840 sqft

Residential on 0.11 Acres

Newcastle, Drumheller, Alberta

Charming and renovated, this three bedroom, one bathroom home is nestled in a serene neighborhood, offering the perfect blend of comfort and convenience. With a thoughtfully, renovated kitchen, bathroom, flooring, and fresh paint itâ€™s move-in ready. Plus, thereâ€™s rough in for a second bathroom for added value. Enjoy the great yard with Ally access perfect for parking or RV just move right into this clean, comfortable, bright split level and enjoy.

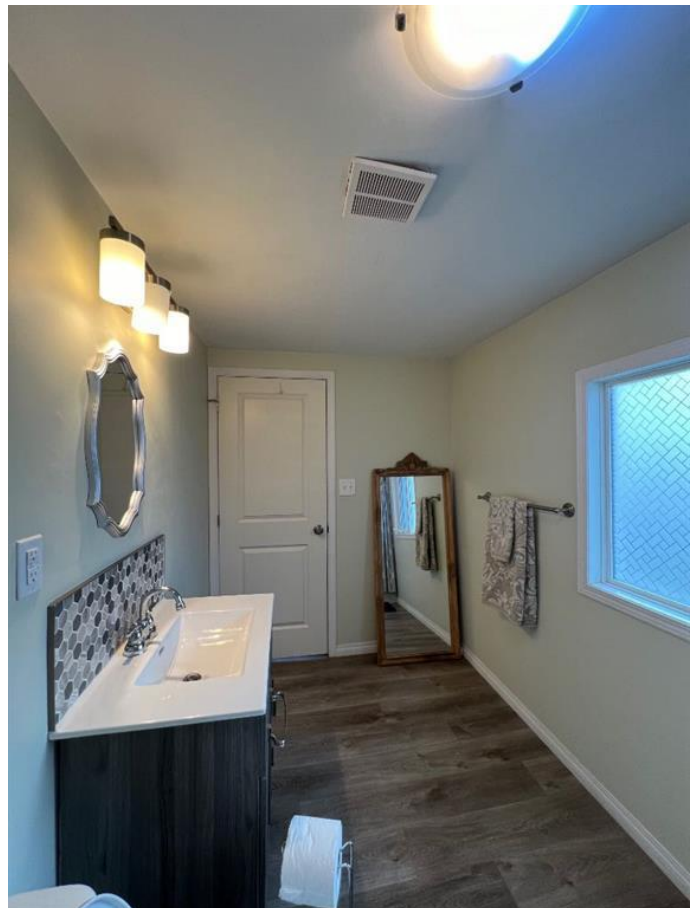
Built in 1955

## Essential Information

MLS® #	A2231152
Price	\$225,000
Bedrooms	3
Bathrooms	1.00
Full Baths	1
Square Footage	840
Acres	0.11
Year Built	1955
Type	Residential
Sub-Type	Detached
Style	3 Level Split
Status	Active

## Community Information

Address	1230 2 Avenue W
Subdivision	Newcastle



City	Drumheller
County	Drumheller
Province	Alberta
Postal Code	T0J0Y2

### **Amenities**

Parking Spaces	2
Parking	Off Street, RV Access/Parking

### **Interior**

Interior Features	Bathroom Rough-in
Appliances	Dryer, Electric Stove, Refrigerator, Washer
Heating	Forced Air
Cooling	None
Has Basement	Yes
Basement	Crawl Space, Partial, Partially Finished

### **Exterior**

Exterior Features	Private Yard
Lot Description	Back Lane, Back Yard, Front Yard
Roof	Asphalt Shingle
Construction	Mixed
Foundation	Combination

### **Additional Information**

Date Listed	June 15th, 2025
Days on Market	87
Zoning	ND

### **Listing Details**

Listing Office	Century 21 Masters
----------------	--------------------

Data is supplied by Pillar 9â„¢ MLS® System. Pillar 9â„¢ is the owner of the copyright in its MLS® System. Data is deemed reliable but is not guaranteed accurate by Pillar 9â„¢. The trademarks MLS®, Multiple Listing Service® and the associated logos are owned by The Canadian Real Estate Association (CREA) and identify the quality of services provided by real estate professionals who are members of CREA. Used under license.