

# \$479,900 - 26 Westhill Drive, Didsbury

MLS® #A2230011

**\$479,900**

4 Bedroom, 3.00 Bathroom, 1,402 sqft

Residential on 0.22 Acres

NONE, Didsbury, Alberta

Welcome to Your New Home in Didsbury!

This updated bungalow offers over 1,400 sq ft of refined living space – ideal for growing families or individuals seeking ample room.

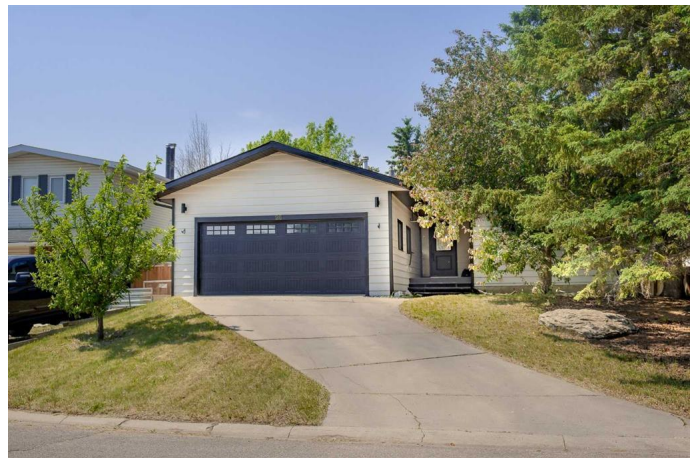
The bright and contemporary kitchen is equipped with sleek cabinetry, generous counter space, and an inviting eating bar, seamlessly connecting to a formal dining room perfectly suited for family meals or entertaining guests. Adjacent to the dining room, the sunken living room with a wood-burning fireplace provides a cozy setting for tranquil winter evenings.

On the main level, you will find two spacious bedrooms and a large primary suite featuring a 3-piece ensuite. Additionally, there is a full main bathroom and a sizable hallway closet, which is plumbed for main floor laundry if desired.

The lower level includes a large family room with a gas fireplace, another substantial bedroom, a luxurious 5-piece bathroom with a jetted tub and separate shower, an oversized laundry room (potential for a fifth bedroom), and two storage rooms.

The oversized backyard serves as a haven for gardeners and families alike, featuring cherry, crab apple trees, and raspberry bushes, several raised garden beds, and extensive space for children and pets to play.

This property also offers a spacious attached double garage, providing plenty of room for vehicles, tools, or extra storage. For those with outdoor toys or travel trailers, the dedicated



RV parking is a major bonus. The backyard is partially enclosed with new fencing on two sides, enhancing both privacy and security. Plus, with ample parking available, thereâ€™s more than enough space for family, guests, and additional vehicles. This exceptional family home offers abundant space, modern updates, and unparalleled charm. Contact us today to arrange your private showing!

Built in 1975

**Essential Information**

MLS® #	A2230011
Price	\$479,900
Bedrooms	4
Bathrooms	3.00
Full Baths	3
Square Footage	1,402
Acres	0.22
Year Built	1975
Type	Residential
Sub-Type	Detached
Style	Bungalow
Status	Active

**Community Information**

Address	26 Westhill Drive
Subdivision	NONE
City	Didsbury
County	Mountain View County
Province	Alberta
Postal Code	T0M0W0

**Amenities**

Parking Spaces	6
Parking	Concrete Driveway, Double Garage Attached, Driveway, Garage Faces Front, Insulated, Off Street, On Street, Oversized, Parking Pad, RV

	Access/Parking
# of Garages	2

## Interior

Interior Features	Central Vacuum, Jetted Tub, Kitchen Island, Laminate Counters, No Smoking Home, Pantry, Recessed Lighting, Soaking Tub, Storage
Appliances	Dishwasher, Dryer, Electric Stove, Refrigerator, Washer, Window Coverings
Heating	Central, Natural Gas
Cooling	None
Fireplace	Yes
# of Fireplaces	2
Fireplaces	Basement, Family Room, Gas, Wood Burning
Has Basement	Yes
Basement	Finished, Full

## Exterior

Exterior Features	Dog Run, Fire Pit, Garden, Private Yard, Storage
Lot Description	Back Yard, Dog Run Fenced In, Few Trees, Front Yard, Garden, Landscaped, Lawn, Level, Private, Rectangular Lot, Treed
Roof	Asphalt Shingle
Construction	Composite Siding, Mixed, Wood Frame
Foundation	Poured Concrete

## Additional Information

Date Listed	June 12th, 2025
Days on Market	8
Zoning	R-1

## Listing Details

Listing Office	eXp Realty
----------------	------------

Data is supplied by Pillar 9â„¢ MLSÂ® System. Pillar 9â„¢ is the owner of the copyright in its MLSÂ® System. Data is deemed reliable but is not guaranteed accurate by Pillar 9â„¢. The trademarks MLSÂ®, Multiple Listing ServiceÂ® and the associated logos are owned by The Canadian Real Estate Association (CREA) and identify the quality of services provided by real estate professionals who are members of CREA. Used under license.