

# \$384,900 - 3108 65 Avenue, Lloydminster

MLS® #A2229579

**\$384,900**

5 Bedroom, 3.00 Bathroom, 1,168 sqft

Residential on 0.15 Acres

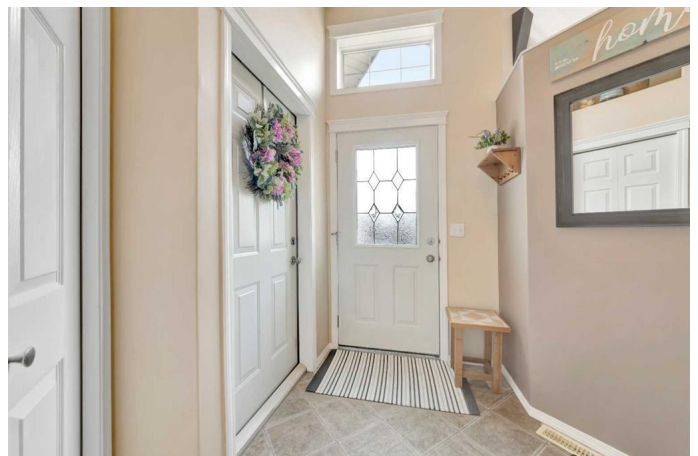
Parkview Estates, Lloydminster, Alberta

This 1,168 sq ft bungalow is ideally located near schools and offers a bright, open layout with vaulted ceilings and hardwood flooring in the living room and hallway. The main floor includes three bedrooms, two bathrooms, and a cozy kitchen with built-in nook seating and a corner sink overlooking the beautifully landscaped backyard. The finished basement adds two more bedrooms, bathroom, family room with gas fireplace, and a games room—perfect for relaxing or entertaining. Outside features RV parking, a garden shed, and a double attached garage. A great fit for families or anyone looking for a comfortable, well-rounded home!

Built in 2002

## Essential Information

MLS® #	A2229579
Price	\$384,900
Bedrooms	5
Bathrooms	3.00
Full Baths	3
Square Footage	1,168
Acres	0.15
Year Built	2002
Type	Residential
Sub-Type	Detached
Style	Bi-Level
Status	Active



## Community Information

Address	3108 65 Avenue
Subdivision	Parkview Estates
City	Lloydminster
County	Lloydminster
Province	Alberta
Postal Code	T9V 3G9

## Amenities

Parking Spaces	6
Parking	Double Garage Attached
# of Garages	2

## Interior

Interior Features	Central Vacuum, Vinyl Windows
Appliances	Dishwasher, Dryer, Electric Stove, Garage Control(s), Microwave Hood Fan, Refrigerator, Washer
Heating	Forced Air, Natural Gas
Cooling	None
Fireplace	Yes
# of Fireplaces	1
Fireplaces	Gas
Has Basement	Yes
Basement	Finished, Full

## Exterior

Exterior Features	Private Yard
Lot Description	Back Yard, Front Yard, Landscaped
Roof	Asphalt Shingle
Construction	Vinyl Siding, Wood Frame
Foundation	Wood

## Additional Information

Date Listed	June 11th, 2025
Days on Market	8
Zoning	R1

## Listing Details

Listing Office	RE/MAX OF LLOYDMINSTER
----------------	------------------------

Data is supplied by Pillar 9â„¢ MLS® System. Pillar 9â„¢ is the owner of the copyright in its MLS® System. Data is deemed reliable but is not guaranteed accurate by Pillar 9â„¢. The trademarks MLS®, Multiple Listing Service® and the associated logos are owned by The Canadian Real Estate Association (CREA) and identify the quality of services provided by real estate professionals who are members of CREA. Used under license.