

\$484,900 - 4571 Eastview Crescent, Rimbey

MLS® #A2228772

\$484,900

4 Bedroom, 3.00 Bathroom, 1,541 sqft

Residential on 0.32 Acres

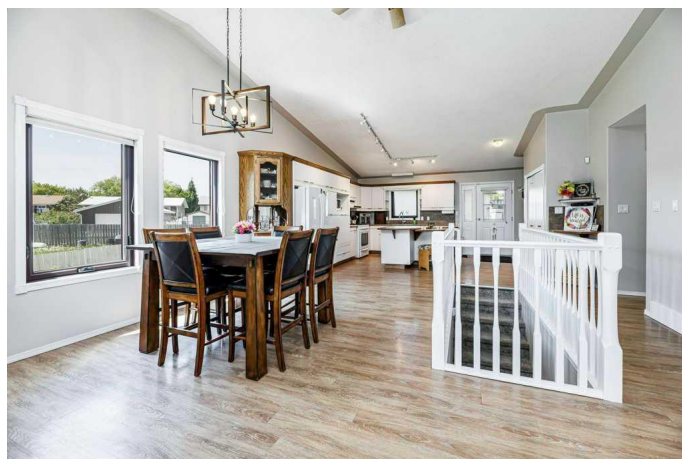
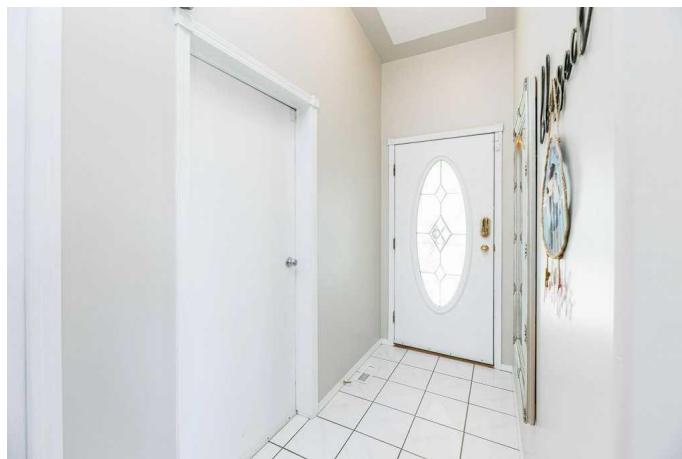
NONE, Rimbey, Alberta

This ACREAGE LIKE property has room for all the extras and is a must see located on a Gorgeous oversized lot that is landscaped with fruit trees and shrubs, plenty of garden space, gazebo, cozy covered new deck with gas hook up for the BBQ, plus a detached 24x36 SHOP and RV parking inside and out! This spacious well maintained 4 bedroom 1500 sq ft bungalow offers an open floorplan with vaulted ceilings, 3 bathrooms, a lovely gas fireplace and convenient main floor laundry! The kitchen features plenty of cupboard space plus an island eating bar and is open to the dining/living room area. The basement offers newer flooring, 2 recreation areas, cold storage, another 3 piece bath, plus a generous sized bedroom for the guest or teen! *Poly B piping has all been recently replaced and the access points have been drywalled and mudded ready for paint! Attached double garage also features hot/cold taps. This home is a must see if you are looking for space inside and out! A pleasure to show!

Built in 1992

Essential Information

| | |
|------------|-----------|
| MLS® # | A2228772 |
| Price | \$484,900 |
| Bedrooms | 4 |
| Bathrooms | 3.00 |
| Full Baths | 3 |



| | |
|----------------|-------------|
| Square Footage | 1,541 |
| Acres | 0.32 |
| Year Built | 1992 |
| Type | Residential |
| Sub-Type | Detached |
| Style | Bungalow |
| Status | Active |

Community Information

| | |
|-------------|------------------------|
| Address | 4571 Eastview Crescent |
| Subdivision | NONE |
| City | Rimbey |
| County | Ponoka County |
| Province | Alberta |
| Postal Code | T0C 2J0 |

Amenities

| | |
|----------------|---------------------------------------------------------------------------------------------------------------------------------------------------------------------|
| Parking Spaces | 2 |
| Parking | Concrete Driveway, Double Garage Attached, Double Garage Detached, Garage Door Opener, Insulated, Oversized, RV Access/Parking, Workshop in Garage, 220 Volt Wiring |
| # of Garages | 2 |

Interior

| | |
|-------------------|-------------------------------------------------------------------------------------------------------------------------------|
| Interior Features | Central Vacuum, Jetted Tub, Kitchen Island, Laminate Counters, Open Floorplan, Storage, Vaulted Ceiling(s), Walk-In Closet(s) |
| Appliances | Dishwasher, Garage Control(s), Gas Stove, Microwave, Range Hood, Refrigerator, Washer/Dryer, Window Coverings |
| Heating | In Floor, Forced Air, Natural Gas |
| Cooling | None |
| Fireplace | Yes |
| # of Fireplaces | 1 |
| Fireplaces | Gas, Living Room, Mantle, Oak, Tile |
| Has Basement | Yes |
| Basement | Finished, Full |

Exterior

| | |
|-------------------|--------------------------------------------------------------------------------------------|
| Exterior Features | BBQ gas line, Garden, Rain Gutters |
| Lot Description | Back Lane, Fruit Trees/Shrub(s), Garden, Irregular Lot, Landscaped, Pie Shaped Lot, Gazebo |

| | |
|--------------|-------------------------------------|
| Roof | Asphalt Shingle |
| Construction | Brick, Composite Siding, Wood Frame |
| Foundation | Poured Concrete |

Additional Information

| | |
|----------------|----------------|
| Date Listed | June 7th, 2025 |
| Days on Market | 12 |
| Zoning | R2 |

Listing Details

| | |
|----------------|------------------------------------|
| Listing Office | RE/MAX real estate central alberta |
|----------------|------------------------------------|

Data is supplied by Pillar 9â„¢ MLSÂ® System. Pillar 9â„¢ is the owner of the copyright in its MLSÂ® System. Data is deemed reliable but is not guaranteed accurate by Pillar 9â„¢. The trademarks MLSÂ®, Multiple Listing ServiceÂ® and the associated logos are owned by The Canadian Real Estate Association (CREA) and identify the quality of services provided by real estate professionals who are members of CREA. Used under license.