

\$649,900 - 1920 65 Street Ne, Calgary

MLS® #A2228201

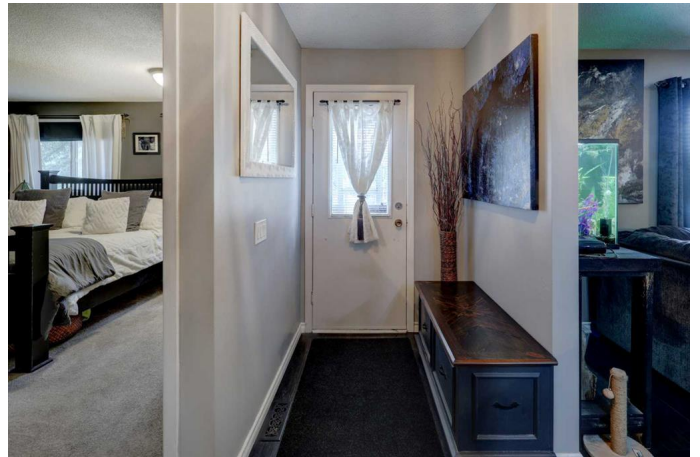
\$649,900

4 Bedroom, 3.00 Bathroom, 1,226 sqft

Residential on 0.18 Acres

Pineridge, Calgary, Alberta

Tucked away on a quiet street in family-friendly Pineridge, this spacious 1,226 sq ft bungalow sits on a R-CG zoned lot, offering outstanding redevelopment potential or room to create your dream backyard oasis. With 4 bedrooms, 3 bathrooms, an oversized double garage (with brand-NEW ROOF), and an RV pad, this home has space, style, and versatility. Step inside to a bright, open-concept main floor where the white kitchen offers plenty of counter and cabinet space, highlighted by a granite tile island repurposed from Calgary's iconic Bow building! The adjoining dining and living rooms are ideal for entertaining, with the living room anchored by a stunning brick-surround wood-burning fireplace. Durable laminate flooring runs through the main living areas, while cozy carpet adds comfort in the bedrooms. The primary bedroom is tucked away for privacy and features a generous closet and convenient 2-piece ensuite. Two additional main floor bedrooms share an updated 4-piece bath with a deep soaker tub. The fully developed lower level offers even more living space with a large rec room, dry bar, and second wood-burning fireplace – perfect for family movie nights or game day. You'll also find a fourth bedroom (currently a gym), a 3-piece bathroom, cold room and a spacious laundry room with loads of storage. Out back, enjoy the oversized double garage, RV pad with paved alley access, and a massive fenced yard filled with mature trees,



shrubs, and raspberry bushes “ just waiting for your personal touch. Located close to several schools, shopping, recreation and easy access to major traffic routes. Whether you™re a homeowner looking for space to grow or an investor eyeing redevelopment in a prime location, this is one you don™t want to miss. Book your showing today before it's gone!

Built in 1975

Essential Information

MLS® #	A2228201
Price	\$649,900
Bedrooms	4
Bathrooms	3.00
Full Baths	2
Half Baths	1
Square Footage	1,226
Acres	0.18
Year Built	1975
Type	Residential
Sub-Type	Detached
Style	Bungalow
Status	Active

Community Information

Address	1920 65 Street Ne
Subdivision	Pineridge
City	Calgary
County	Calgary
Province	Alberta
Postal Code	T1Y 1N6

Amenities

Parking Spaces	3
Parking	Double Garage Detached, Garage Door Opener, On Street, Oversized, RV Access/Parking

of Garages 2

Interior

Interior Features Built-in Features, Central Vacuum, Dry Bar, Soaking Tub
Appliances Dishwasher, Dryer, Electric Stove, Garage Control(s), Range Hood, Refrigerator, Washer, Window Coverings
Heating Forced Air, Natural Gas
Cooling None
Fireplace Yes
of Fireplaces 2
Fireplaces Brick Facing, Family Room, Living Room, Wood Burning
Has Basement Yes
Basement Exterior Entry, Finished, Full

Exterior

Exterior Features Private Yard
Lot Description Back Lane, Back Yard, Corner Lot, Fruit Trees/Shrub(s), Landscaped, Pie Shaped Lot
Roof Asphalt Shingle
Construction Vinyl Siding, Wood Frame
Foundation Poured Concrete

Additional Information

Date Listed June 6th, 2025
Days on Market 15
Zoning R-CG

Listing Details

Listing Office RE/MAX Complete Realty

Data is supplied by Pillar 9â„¢ MLSÂ® System. Pillar 9â„¢ is the owner of the copyright in its MLSÂ® System. Data is deemed reliable but is not guaranteed accurate by Pillar 9â„¢. The trademarks MLSÂ®, Multiple Listing ServiceÂ® and the associated logos are owned by The Canadian Real Estate Association (CREA) and identify the quality of services provided by real estate professionals who are members of CREA. Used under license.