

\$315,000 - 27 Skyline Crescent, Claresholm

MLS® #A2227191

\$315,000

2 Bedroom, 2.00 Bathroom, 1,012 sqft
Residential on 0.10 Acres

NONE, Claresholm, Alberta

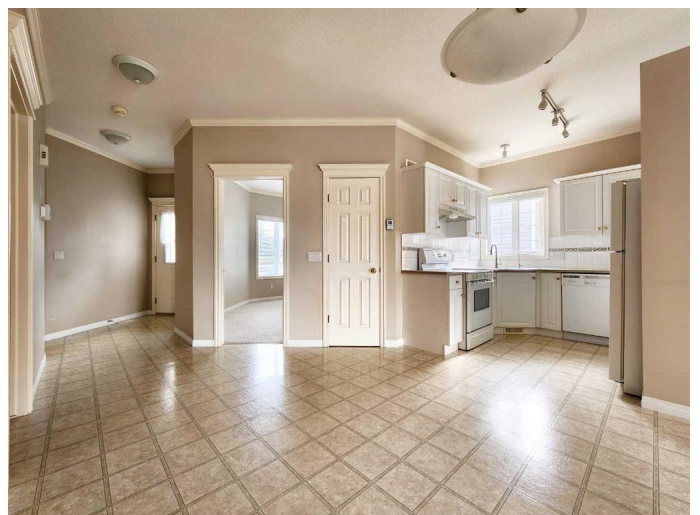
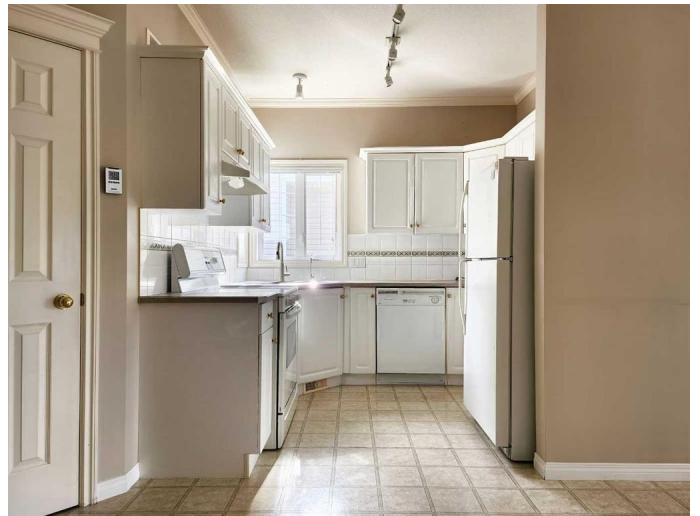
This thoughtfully cared-for bungalow is the perfect fit for retirees, downsizers, singles, or even healthcare professionals seeking a quiet, low-maintenance lifestyle close to essential services. Warm, functional, and move-in ready, this isn't just a house—it's a place to feel at home.

Located in a peaceful cul-de-sac, this charming 2-bedroom, 2-bath home was built in 2002 and offers the ease and comfort of main floor living. The open-concept layout is filled with natural light, creating a bright and inviting atmosphere from the moment you step inside.

At the heart of the home is a well-designed, sunlit kitchen, open to both the dining area and living room, allowing for a seamless flow whether you're entertaining or enjoying a quiet night in. The south-facing primary bedroom features a 3-piece ensuite with a walk-in shower, and main floor laundry adds to the everyday convenience.

The north-facing second bedroom offers flexible use—perfect as a guest room, home office, or cozy den, depending on your needs.

Step outside from the living room to a large back deck—complete with a privacy screen and gas BBQ hookup—ideal for summer dinners and relaxing afternoons. A welcoming front deck provides the perfect spot for



morning coffee or evening unwinding. The well-maintained yard includes a garden area and a storage shed for added functionality.

Additional features include an attached single garage and a concrete slab crawl space that houses the furnace and hot water tank, while offering even more storage.

Location is another key highlight—this property is within close proximity to the hospital, assisted living, and extended care facilities, making it an ideal home for healthcare professionals or anyone wanting quick, convenient access to health services. It’s an easy walk or short commute to work or care.

Peaceful, practical, and perfectly located, this home combines comfort, convenience, and simplicity—with just two steps to enter, it's also a great option for those seeking improved accessibility.

Built in 2002

Essential Information

MLS® #	A2227191
Price	\$315,000
Bedrooms	2
Bathrooms	2.00
Full Baths	1
Half Baths	1
Square Footage	1,012
Acres	0.10
Year Built	2002
Type	Residential
Sub-Type	Semi Detached
Style	Bungalow, Side by Side
Status	Active

Community Information

Address	27 Skyline Crescent
Subdivision	NONE
City	Claresholm
County	Willow Creek No. 26, M.D. of
Province	Alberta
Postal Code	T0L0T0

Amenities

Parking Spaces	2
Parking	Single Garage Attached, Concrete Driveway
# of Garages	1

Interior

Interior Features	Open Floorplan, Pantry, See Remarks, Storage
Appliances	See Remarks
Heating	Forced Air, Natural Gas
Cooling	None
Has Basement	Yes
Basement	Crawl Space, Full

Exterior

Exterior Features	BBQ gas line, Garden, Other, Storage
Lot Description	Front Yard, Landscaped, Lawn
Roof	Asphalt Shingle
Construction	Brick, Vinyl Siding, Wood Frame
Foundation	Poured Concrete

Additional Information

Date Listed	June 6th, 2025
Days on Market	52
Zoning	R1 Multiple Res.

Listing Details

Listing Office	RE/MAX REAL ESTATE - LETHBRIDGE (CLARESHOLM)
----------------	--

Data is supplied by Pillar 9â„¢ MLS® System. Pillar 9â„¢ is the owner of the copyright in its MLS® System. Data is deemed reliable but is not guaranteed accurate by Pillar 9â„¢. The trademarks MLS®, Multiple Listing Service® and the associated logos are owned by The Canadian Real Estate Association (CREA) and identify the quality of services provided by real estate professionals who are members of CREA. Used under license.