

\$729,000 - 1200 Iron Landing Way, Crossfield

MLS® #A2225888

\$729,000

5 Bedroom, 4.00 Bathroom, 2,153 sqft

Residential on 0.11 Acres

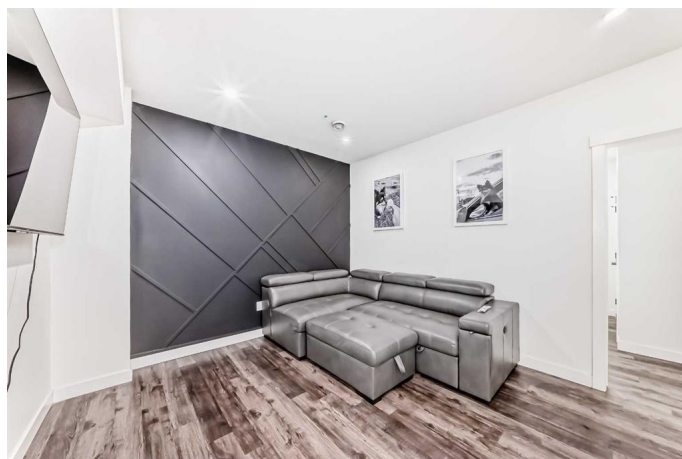
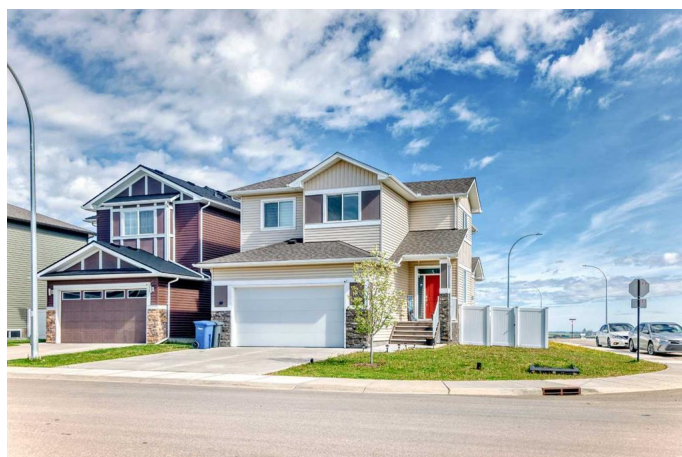
NONE, Crossfield, Alberta

Looking for more space, more upgrades, and more value? This former SHOW HOME on a massive CORNER LOT has it all! With 5 beds, 3.5 baths, and a BUILDER FINISHED BASEMENT, there's room for everyone's plus bonus space for play, work, or guests. The kitchen is sleek and spacious, with a big island and walk-through pantry. Love relaxing? Head upstairs to your ensuite with a soaker tub, or kick back by the cozy fireplace. Got kids? They'll love the big fenced yard and quiet streets. With CENTRAL A/C, a security system, tall doors, and a roomy garage—this home is built for real life. Come fall in love in Crossfield!

Built in 2018

Essential Information

MLS® #	A2225888
Price	\$729,000
Bedrooms	5
Bathrooms	4.00
Full Baths	3
Half Baths	1
Square Footage	2,153
Acres	0.11
Year Built	2018
Type	Residential
Sub-Type	Detached
Style	2 Storey



Status Active

Community Information

Address 1200 Iron Landing Way
Subdivision NONE
City Crossfield
County Rocky View County
Province Alberta
Postal Code T0M0S0

Amenities

Parking Spaces 4
Parking Double Garage Attached, Front Drive
of Garages 2

Interior

Interior Features Built-in Features, Double Vanity, High Ceilings, Kitchen Island, No Smoking Home, Open Floorplan, Pantry, Quartz Counters, Soaking Tub, Stone Counters, Walk-In Closet(s)
Appliances Central Air Conditioner, Dishwasher, Electric Stove, Garage Control(s), Microwave Hood Fan, Refrigerator, Washer/Dryer, Window Coverings
Heating Forced Air, Natural Gas
Cooling Central Air
Fireplace Yes
of Fireplaces 1
Fireplaces Gas
Has Basement Yes
Basement Finished, Full

Exterior

Exterior Features Private Yard
Lot Description Back Lane, Corner Lot
Roof Asphalt Shingle
Construction Stone, Vinyl Siding, Wood Frame
Foundation Poured Concrete

Additional Information

Date Listed May 29th, 2025
Days on Market 67
Zoning R1

Listing Details

Listing Office Real Broker

Data is supplied by Pillar 9â„¢ MLS® System. Pillar 9â„¢ is the owner of the copyright in its MLS® System. Data is deemed reliable but is not guaranteed accurate by Pillar 9â„¢. The trademarks MLS®, Multiple Listing Service® and the associated logos are owned by The Canadian Real Estate Association (CREA) and identify the quality of services provided by real estate professionals who are members of CREA. Used under license.