

\$225,000 - 310 Engineer Avenue, Coaldale

MLS® #A2224463

\$225,000

3 Bedroom, 2.00 Bathroom, 1,511 sqft
Mobile on 0.00 Acres

NONE, Coaldale, Alberta

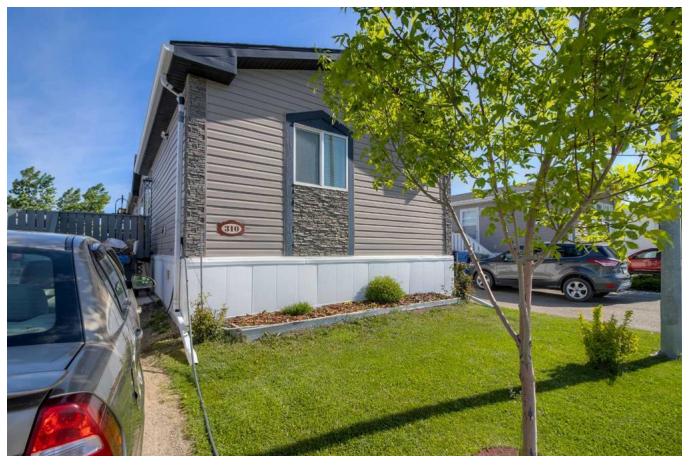
Welcome to this well maintained mobile home in Coaldale. The home is located in the beautiful maintained mobile park Station ground. It features an open-concept layout with a living room, dining area, and a spacious kitchen complete with ample cabinets and a walk-in pantry. The primary bedroom includes a walk-in closet and a 3-piece ensuite with a step-in shower and large vanity. Conveniently located nearby are the laundry room. At the opposite end of the home are two additional bedrooms and 4-piece bath. Outside, a large deck for entertaining and plenty of room for a garden .

Built in 2017

Essential Information

MLS® #	A2224463
Price	\$225,000
Bedrooms	3
Bathrooms	2.00
Full Baths	2
Square Footage	1,511
Acres	0.00
Year Built	2017
Type	Mobile
Sub-Type	Mobile
Style	Double Wide Mobile Home
Status	Active

Community Information



Address	310 Engineer Avenue
Subdivision	NONE
City	Coaldale
County	Lethbridge County
Province	Alberta
Postal Code	T1M 1P8

Amenities

Amenities	Other
Parking Spaces	2
Parking	Parking Pad

Interior

Appliances	Refrigerator, Microwave Hood Fan, Oven, Washer/Dryer
Heating	Forced Air

Exterior

Roof	Asphalt Shingle
------	-----------------

Additional Information

Date Listed	May 28th, 2025
Days on Market	97
HOA Fees	435
HOA Fees Freq.	MON

Listing Details

Listing Office	Real Estate Centre - Coaldale
----------------	-------------------------------

Data is supplied by Pillar 9â„¢ MLSÂ® System. Pillar 9â„¢ is the owner of the copyright in its MLSÂ® System. Data is deemed reliable but is not guaranteed accurate by Pillar 9â„¢. The trademarks MLSÂ®, Multiple Listing ServiceÂ® and the associated logos are owned by The Canadian Real Estate Association (CREA) and identify the quality of services provided by real estate professionals who are members of CREA. Used under license.