

\$665,000 - 355 Skeena Crescent W, Lethbridge

MLS® #A2224446

\$665,000

4 Bedroom, 3.00 Bathroom, 1,180 sqft
Residential on 0.12 Acres

Garry Station, Lethbridge, Alberta

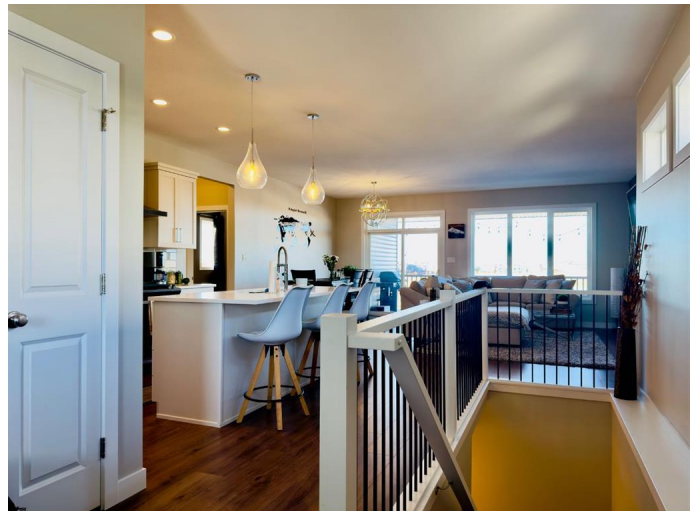
Welcome to 355 Skeena Crescent W, a thoughtfully designed bungalow in the highly sought-after Garry Station neighborhood. This exceptional home offers the perfect blend of modern living and practical functionality, complete with a rare triple-car garage and a fully legal basement suite—an ideal setup for extended family living or as a mortgage helper.

From the moment you walk in, you're greeted by an open-concept main floor that feels bright, spacious, and welcoming. The kitchen is a true centerpiece, boasting sleek modern appliances, ample counter space, and a large island that makes it perfect for both daily living and entertaining. The adjoining living and dining areas flow seamlessly, creating a warm and inviting space to gather with friends and family.

The primary bedroom serves as a private retreat with its own walk-in closet and a stylish ensuite bathroom.

What truly sets this home apart is the fully developed basement featuring a legal suite with a private walk out entrance. Complete with its own kitchen, living room, large bedrooms, and bathroom, the suite offers an excellent opportunity to generate rental income or provide a comfortable space for multi-generational living.

Attached, the massive triple-car garage is a



dream for car enthusiasts, hobbyists, or anyone in need of serious storage. The home sits in an ideal location close to parks, schools, shopping, and the YMCA, making it perfect for families or professionals alike.

Whether you're looking for a forever home with extra space or an investment opportunity with built-in income potential, 355 Skeena Crescent W delivers on every level. Call your favourite REALTOR® today and schedule a private viewing!

Built in 2018

Essential Information

MLS® #	A2224446
Price	\$665,000
Bedrooms	4
Bathrooms	3.00
Full Baths	3
Square Footage	1,180
Acres	0.12
Year Built	2018
Type	Residential
Sub-Type	Detached
Style	Bungalow
Status	Active

Community Information

Address	355 Skeena Crescent W
Subdivision	Garry Station
City	Lethbridge
County	Lethbridge
Province	Alberta
Postal Code	T1J5K3

Amenities

Parking Spaces	6
Parking	Triple Garage Attached

of Garages 3

Interior

Interior Features Breakfast Bar, Closet Organizers, Granite Counters, No Smoking Home, Open Floorplan, Vinyl Windows

Appliances Dishwasher, Electric Range, Microwave, Microwave Hood Fan, Range Hood, Refrigerator, Stove(s), Washer/Dryer

Heating Forced Air

Cooling Full

Fireplace Yes

of Fireplaces 1

Fireplaces Gas

Has Basement Yes

Basement Finished, Full, Suite, Walk-Out

Exterior

Exterior Features Balcony, Lighting

Lot Description City Lot, Cleared, Lawn, Rectangular Lot, Sloped Down, Street Lighting

Roof Asphalt Shingle

Construction Concrete, Mixed, Vinyl Siding, Wood Frame

Foundation Poured Concrete

Additional Information

Date Listed May 24th, 2025

Days on Market 27

Zoning R-L

Listing Details

Listing Office Real Estate Centre - Blairmore

Data is supplied by Pillar 9â„¢ MLSÂ® System. Pillar 9â„¢ is the owner of the copyright in its MLSÂ® System. Data is deemed reliable but is not guaranteed accurate by Pillar 9â„¢. The trademarks MLSÂ®, Multiple Listing ServiceÂ® and the associated logos are owned by The Canadian Real Estate Association (CREA) and identify the quality of services provided by real estate professionals who are members of CREA. Used under license.