

\$329,900 - 109, 6000 Somervale Court Sw, Calgary

MLS® #A2222594

\$329,900

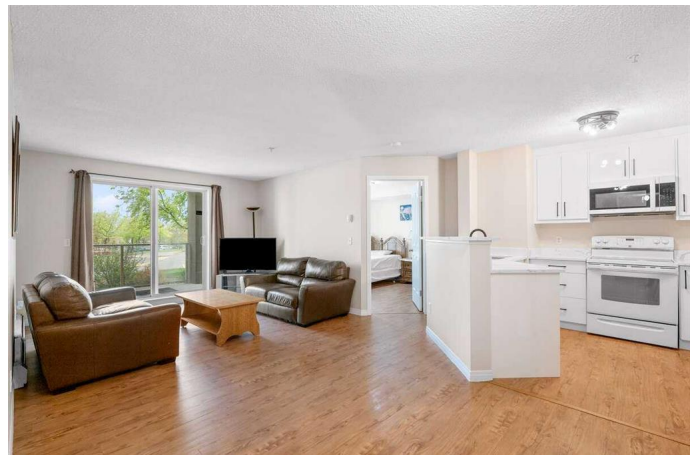
2 Bedroom, 2.00 Bathroom, 835 sqft

Residential on 0.00 Acres

Somerset, Calgary, Alberta

For more information, please click Brochure button.

ALL UTILITIES INCLUDED IN CONDO FEES | 2 PARKINGS INCLUDING 1 HEATED UNDERGROUND & 1 OUTSIDE STALL | 2 MINTUES WALK to SOMERSET LRT STATION. Beautiful large, NEWLY RENOVATED, 2 bedrooms, 2 full bathrooms, Non-Smoking, No Pets, MAIN FLOOR condo located close to building entrance for easy access, BRAND-NEW KITCHEN and upgraded bathroom vanities with QUARTZ COUNERTOPS, LUXURY VINYL PLANKS flooring throughout the condo. PANTRY / STORAGE ROOM AND IN-SUITE LAUDRY. ALL FURNITURE INCLUDED. OPEN CONCEPT floor plan with bedrooms on the opposite side of the unit for added privacy, Master bedroom with walk-in closet and en-suite full bathroom, Guest bedroom with adjacent full bathroom. This condo is located in very quiet building of highly desirable Condo Complex of Somervale Court in the quiet community of Somerset in South Calgary Patio overlooks green space and landscaping with trees and is very private. Landscaped open area in front of the building. Close to transit (LRT & Bus), YMCA, Library, Multiplex cinema and host of shopping within a 2 KM radius (Walmart, Superstore, Co-op, Safeway, Home Depot, Canadian Tire, Future Shop, Staples, Tim Hortons, Starbucks, Banks (RBC, CIBC, TD, BMO), walk to Bishop O'Byrne Catholic High School, South Calgary Health Center.



Everything you need is only moments away. Downtown is easily accessible via the C-train or MacLeod or Deerfoot Trails. Nearby Plaza includes medical facilities such as South Calgary Urgent Care and walk in clinic, dental clinic and much more. Immediate East of Somerset is Fish Creek Park with its extensive cycling paths and to the South is the Stoney Trail with quick access West to the mountains and Banff National Park. One of a kind!

Built in 2001

Essential Information

MLS® #	A2222594
Price	\$329,900
Bedrooms	2
Bathrooms	2.00
Full Baths	2
Square Footage	835
Acres	0.00
Year Built	2001
Type	Residential
Sub-Type	Apartment
Style	Single Level Unit
Status	Active

Community Information

Address	109, 6000 Somervale Court Sw
Subdivision	Somerset
City	Calgary
County	Calgary
Province	Alberta
Postal Code	T2Y 4J4

Amenities

Amenities	Elevator(s), Other, Parking, Snow Removal
Parking Spaces	2
Parking	Stall, Underground

Interior

Interior Features	Elevator, Kitchen Island, No Animal Home, No Smoking Home, Open Floorplan, Vinyl Windows
Appliances	Dishwasher, Electric Range, Garage Control(s), Microwave, Microwave Hood Fan, Refrigerator, Washer/Dryer Stacked, Window Coverings
Heating	Baseboard
Cooling	None
# of Stories	4
Basement	None

Exterior

Exterior Features	Lighting
Roof	Asphalt Shingle
Construction	Stucco
Foundation	Poured Concrete

Additional Information

Date Listed	May 19th, 2025
Days on Market	33
Zoning	M-C2

Listing Details

Listing Office	Easy List Realty
----------------	------------------

Data is supplied by Pillar 9â„¢ MLS® System. Pillar 9â„¢ is the owner of the copyright in its MLS® System. Data is deemed reliable but is not guaranteed accurate by Pillar 9â„¢. The trademarks MLS®, Multiple Listing Service® and the associated logos are owned by The Canadian Real Estate Association (CREA) and identify the quality of services provided by real estate professionals who are members of CREA. Used under license.