

\$1,190,000 - 2139 51 Avenue Sw, Calgary

MLS® #A2222324

\$1,190,000

5 Bedroom, 2.00 Bathroom, 1,029 sqft
Residential on 0.14 Acres

North Glenmore Park, Calgary, Alberta

BEING SOLD AS LAND VALUE ONLY. 50 X
122 Ft RCG corner lot.....With plans

Built in 1949

Essential Information

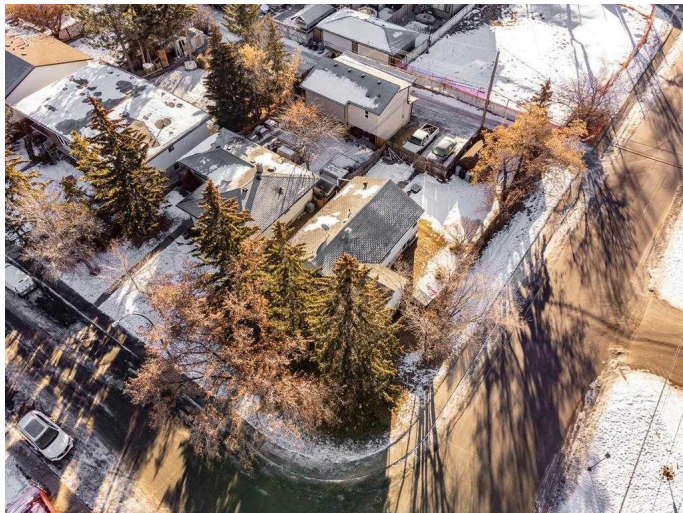
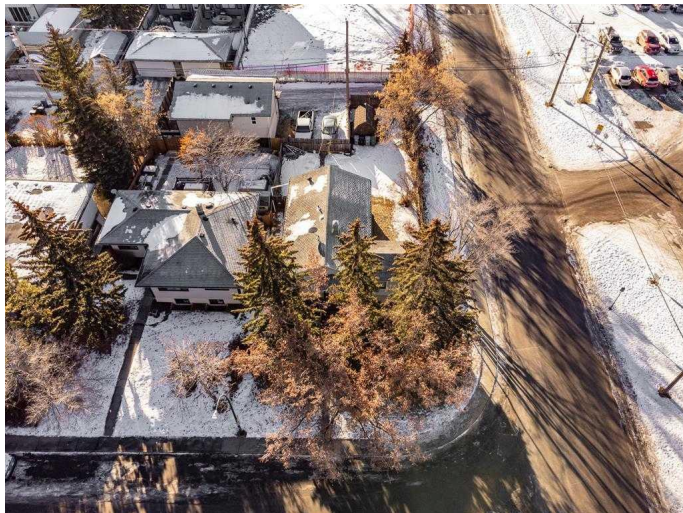
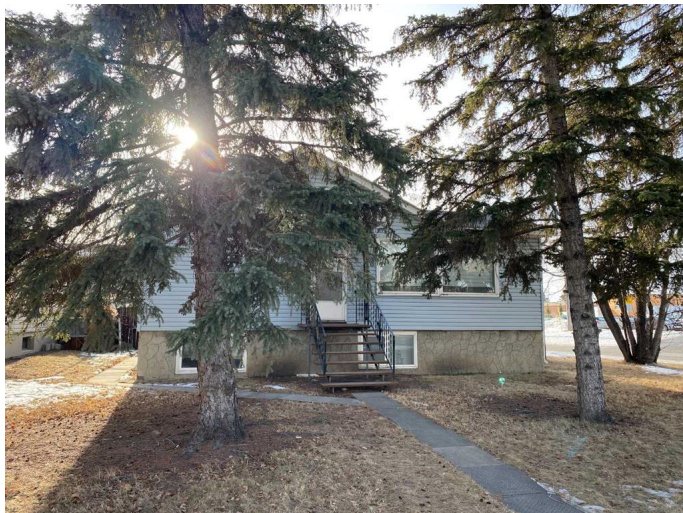
| | |
|----------------|-------------|
| MLS® # | A2222324 |
| Price | \$1,190,000 |
| Bedrooms | 5 |
| Bathrooms | 2.00 |
| Full Baths | 2 |
| Square Footage | 1,029 |
| Acres | 0.14 |
| Year Built | 1949 |
| Type | Residential |
| Sub-Type | Detached |
| Style | Bungalow |
| Status | Active |

Community Information

| | |
|-------------|---------------------|
| Address | 2139 51 Avenue Sw |
| Subdivision | North Glenmore Park |
| City | Calgary |
| County | Calgary |
| Province | Alberta |
| Postal Code | T3E 1J8 |

Amenities

| | |
|----------------|------------|
| Parking Spaces | 2 |
| Parking | Off Street |



Interior

| | |
|-------------------|------------------------------|
| Interior Features | See Remarks |
| Appliances | Electric Stove, Refrigerator |
| Heating | Forced Air, Natural Gas |
| Cooling | None |
| Has Basement | Yes |
| Basement | Finished, Full |

Exterior

| | |
|-------------------|-----------------|
| Exterior Features | None |
| Lot Description | Corner Lot |
| Roof | Asphalt Shingle |
| Construction | Wood Frame |
| Foundation | Poured Concrete |

Additional Information

| | |
|----------------|----------------|
| Date Listed | May 17th, 2025 |
| Days on Market | 33 |
| Zoning | R-CG |

Listing Details

| | |
|----------------|--------------|
| Listing Office | RE/MAX First |
|----------------|--------------|

Data is supplied by Pillar 9â„¢ MLSÂ® System. Pillar 9â„¢ is the owner of the copyright in its MLSÂ® System. Data is deemed reliable but is not guaranteed accurate by Pillar 9â„¢. The trademarks MLSÂ®, Multiple Listing ServiceÂ® and the associated logos are owned by The Canadian Real Estate Association (CREA) and identify the quality of services provided by real estate professionals who are members of CREA. Used under license.