

# \$485,000 - 14 Strathford Place, Strathmore

MLS® #A2221031

**\$485,000**

4 Bedroom, 3.00 Bathroom, 1,165 sqft

Residential on 0.12 Acres

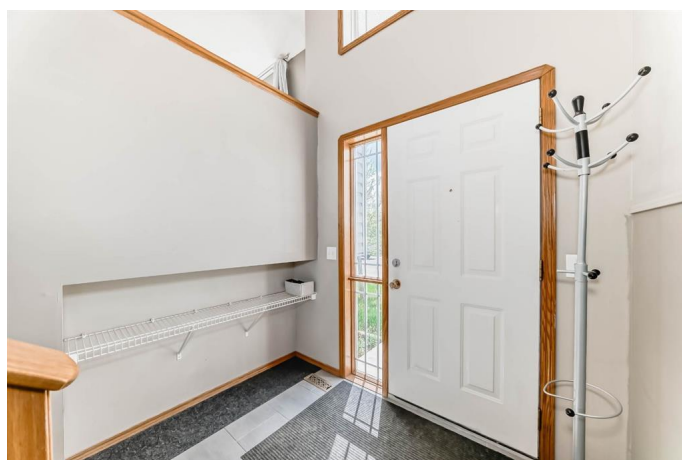
Strathaven, Strathmore, Alberta

What a great place to call home. Location is key. Close to Hospital, schools, and recreation centres. Walking in you are welcomed by vaulted ceilings making it feel very bright and airy. The living room has beautiful south facing window and ample room for large furniture. The kitchen has loads of cupboards and counter space with pantry and a large eating area. Off the eating area is a door to your wonderful upgraded back deck and large yard waiting for your future oversized detached garage! There is 3 great size bedrooms. The primary has its own 3 piece ensuite and walk in closet. Completing the main is a 4 piece main bath. The lower is partially finished with a bedroom, bathroom and family room area. this home could be 6 bedrooms if wanted. Just waiting your finishing touches. This home is a must see because it is very clean and well taken care of.

Built in 2002

## Essential Information

MLS® #	A2221031
Price	\$485,000
Bedrooms	4
Bathrooms	3.00
Full Baths	3
Square Footage	1,165
Acres	0.12
Year Built	2002



Type	Residential
Sub-Type	Detached
Style	Bi-Level
Status	Active

### Community Information

Address	14 Strathford Place
Subdivision	Strathaven
City	Strathmore
County	Wheatland County
Province	Alberta
Postal Code	T1P1S4

### Amenities

Parking Spaces	4
Parking	Off Street, RV Access/Parking

### Interior

Interior Features	Ceiling Fan(s), Pantry, Vaulted Ceiling(s), Vinyl Windows
Appliances	Dishwasher, Electric Stove, Range Hood, Refrigerator, Window Coverings
Heating	Forced Air, Natural Gas
Cooling	None
Has Basement	Yes
Basement	Full, Partially Finished

### Exterior

Exterior Features	Other
Lot Description	Back Lane, Back Yard, Front Yard, Landscaped, Lawn, Level, See Remarks
Roof	Asphalt Shingle
Construction	Vinyl Siding, Wood Frame
Foundation	Poured Concrete

### Additional Information

Date Listed	May 13th, 2025
Days on Market	36
Zoning	R1

### Listing Details

Listing Office

RE/MAX First

Data is supplied by Pillar 9â„¢ MLSÂ® System. Pillar 9â„¢ is the owner of the copyright in its MLSÂ® System. Data is deemed reliable but is not guaranteed accurate by Pillar 9â„¢. The trademarks MLSÂ®, Multiple Listing ServiceÂ® and the associated logos are owned by The Canadian Real Estate Association (CREA) and identify the quality of services provided by real estate professionals who are members of CREA. Used under license.