

# \$398,000 - 8915 Hammonds Drive, Lac La Biche

MLS® #A2219778

## \$398,000

5 Bedroom, 2.00 Bathroom, 1,122 sqft  
Residential on 0.16 Acres

Lac La Biche, Lac La Biche, Alberta

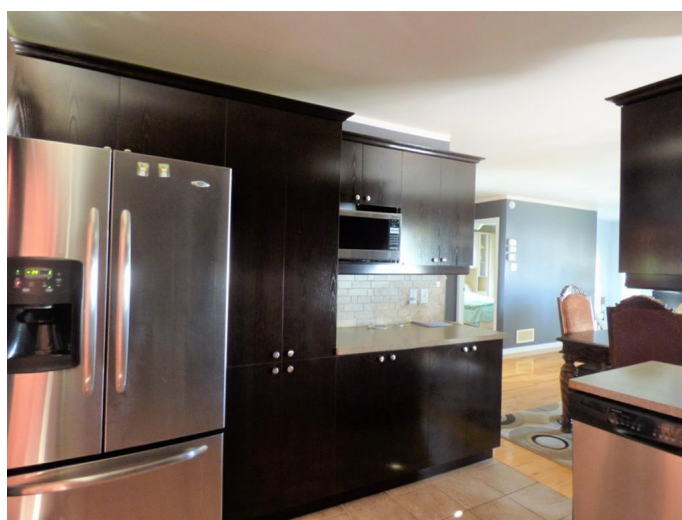
Immaculately kept home located within walking distance to High School, Community Recreation Center & sporting fields.

This 5 bedroom, 2 bathroom home offers 2 large living spaces, and a formal dinning space just off the kitchen. Home has been tastefully finished with hardwood flooring in the living and dinning room, and custom tile in the bathroom and entry ways. Relax on your back deck over looking a peaceful rock garden and pond in your private and fenced back yard. Your attached single car garage enters the house through the basement if you are looking for a home with a separate entrance to the basement, this is it! As an added bonus and to keep you toasty warm, the basement is also equipped with electric heat! Call today for your personal viewing of this great home!

Built in 2007

### Essential Information

MLS® #	A2219778
Price	\$398,000
Bedrooms	5
Bathrooms	2.00
Full Baths	2
Square Footage	1,122
Acres	0.16
Year Built	2007
Type	Residential



Sub-Type	Detached
Style	Bungalow
Status	Active

### Community Information

Address	8915 Hammonds Drive
Subdivision	Lac La Biche
City	Lac La Biche
County	Lac La Biche County
Province	Alberta
Postal Code	T0A 2C0

### Amenities

Parking Spaces	3
Parking	Off Street, Parking Pad, RV Access/Parking

### Interior

Interior Features	Ceiling Fan(s), Crown Molding, Vinyl Windows
Appliances	Dishwasher, Electric Stove, Refrigerator, Washer/Dryer
Heating	Forced Air
Cooling	None
Has Basement	Yes
Basement	Exterior Entry, Finished, Full

### Exterior

Exterior Features	Private Entrance
Lot Description	Back Yard, Backs on to Park/Green Space, Cul-De-Sac
Roof	Asphalt Shingle
Construction	Vinyl Siding, Wood Frame
Foundation	Poured Concrete

### Additional Information

Date Listed	May 9th, 2025
Days on Market	40
Zoning	Low Density Residential

### Listing Details

Listing Office	RE/MAX LA BICHE REALTY
----------------	------------------------

Data is supplied by Pillar 9â„¢ MLS® System. Pillar 9â„¢ is the owner of the copyright in its MLS® System. Data is deemed reliable but is not guaranteed accurate by Pillar 9â„¢. The trademarks MLS®, Multiple Listing Service® and

the associated logos are owned by The Canadian Real Estate Association (CREA) and identify the quality of services provided by real estate professionals who are members of CREA. Used under license.