

\$229,900 - Lot 10 Deer Park Estates, Rural Woodlands County

MLS® #A2218882

\$229,900

0 Bedroom, 0.00 Bathroom,
Land on 2.50 Acres

NONE, Rural Woodlands County, Alberta

Desirable 2.5 acre lot in the upscale neighborhood of Deer Park Estates. This lovely lot backs onto Beaver Creek and is only a 2 minute drive to Whitecourt. Property has Town water and sewer! Perfect area to build your Dream Home!

Essential Information

| | |
|-----------|------------------|
| MLS® # | A2218882 |
| Price | \$229,900 |
| Bathrooms | 0.00 |
| Acres | 2.50 |
| Type | Land |
| Sub-Type | Residential Land |
| Status | Active |

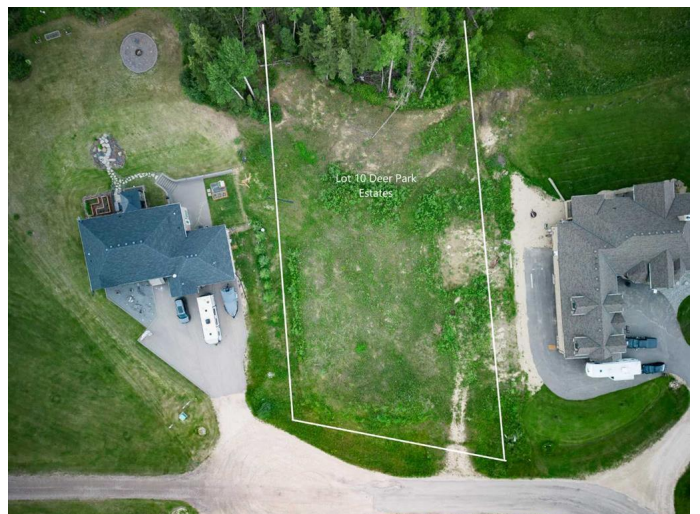
Community Information

| | |
|-------------|--------------------------|
| Address | Lot 10 Deer Park Estates |
| Subdivision | NONE |
| City | Rural Woodlands County |
| County | Woodlands County |
| Province | Alberta |
| Postal Code | T7S 0C7 |

Amenities

| | |
|-----------|-----------------------|
| Utilities | Electricity Available |
|-----------|-----------------------|

School Information



District Living Waters Catholic Regional Division No. 42

Additional Information

Date Listed May 7th, 2025
Days on Market 127
Zoning CRR

Listing Details

Listing Office RE/MAX ADVANTAGE (WHITECOURT)

Data is supplied by Pillar 9â„¢ MLS® System. Pillar 9â„¢ is the owner of the copyright in its MLS® System. Data is deemed reliable but is not guaranteed accurate by Pillar 9â„¢. The trademarks MLS®, Multiple Listing Service® and the associated logos are owned by The Canadian Real Estate Association (CREA) and identify the quality of services provided by real estate professionals who are members of CREA. Used under license.