

\$450,000 - On 19-0, Rural Stettler No. 6, County of

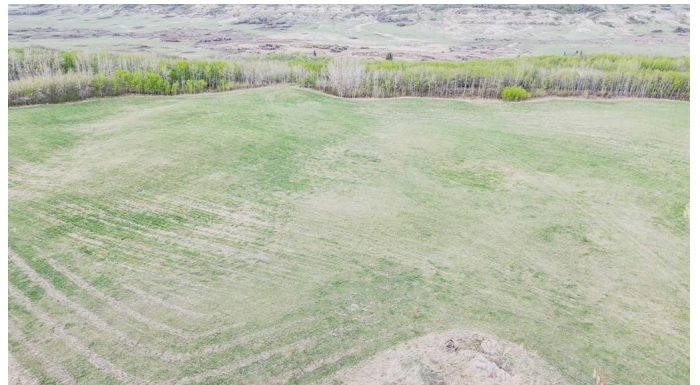
MLS® #A2217638

\$450,000

0 Bedroom, 0.00 Bathroom,
Agri-Business on 156.02 Acres

NONE, Rural Stettler No. 6, County of, Alberta

Up for offer is this picturesque, 156.02 acre parcel of farm land in the County of Stettler. This is an absolutely beautiful quarter of land with stunning views as it sits on top of the Meeting Creek coulee and extends down past the creek at the bottom. This land has 10 acres currently seeded down to hay and 146.02 acres of pasture with perimeter fencing and the creek is an ideal water supply for cattle or horses. This could be a great place for you to set up a farming operation or expand your current business. This parcel of land would also be an ideal spot to build your dream home, cabin or hunting lodge, or park your RV for the summers. It is just 3 miles to the Village of Donalda, a central Alberta location. Donalda is a vibrant community with a K-9 school, tea house café, hotel, riding arena, museum, a number of historic buildings, as well as several community events held throughout the year. Local attractions are close at hand with Buffalo Lake and golf courses just under 20 minutes away. This property is just 25 minutes to Stettler, and only 42 minutes to Camrose. This community is great place to farm, raise a family, or just get out of the city.



Essential Information

MLS® #	A2217638
Price	\$450,000

Bathrooms	0.00
Acres	156.02
Type	Agri-Business
Sub-Type	Agriculture
Status	Active

Community Information

Address	On 19-0
Subdivision	NONE
City	Rural Stettler No. 6, County of
County	Stettler No. 6, County of
Province	Alberta
Postal Code	T0B 1H0

Additional Information

Date Listed	May 5th, 2025
Days on Market	49
Zoning	Agriculture

Listing Details

Listing Office	RE/MAX 1st Choice Realty
----------------	--------------------------

Data is supplied by Pillar 9â„¢ MLS® System. Pillar 9â„¢ is the owner of the copyright in its MLS® System. Data is deemed reliable but is not guaranteed accurate by Pillar 9â„¢. The trademarks MLS®, Multiple Listing Service® and the associated logos are owned by The Canadian Real Estate Association (CREA) and identify the quality of services provided by real estate professionals who are members of CREA. Used under license.