

\$259,000 - 110 Moberly Road, Grande Cache

MLS® #A2212831

\$259,000

4 Bedroom, 4.00 Bathroom, 1,568 sqft

Residential on 0.28 Acres

NONE, Grande Cache, Alberta

Great home to live and supplement your mortgage. This home on its second floor boosts 2 good sized rooms, plus master suite, with walk-in closet and 3 piece bathroom. Main floor includes living room, half bath and a spacious kitchen that is ready for your culinary masterpieces! Upper floor's secondary 3 piece bathroom also includes washer and dryer. Supplement your mortgage with the suite in the basement, featuring in floor heating, separate entrance, 1 bedroom , 1 bathroom full kitchen and living space and a washer/dryer unit.

Built in 2005

Essential Information

| | |
|----------------|------------------------|
| MLS® # | A2212831 |
| Price | \$259,000 |
| Bedrooms | 4 |
| Bathrooms | 4.00 |
| Full Baths | 3 |
| Half Baths | 1 |
| Square Footage | 1,568 |
| Acres | 0.28 |
| Year Built | 2005 |
| Type | Residential |
| Sub-Type | Semi Detached |
| Style | 2 Storey, Side by Side |
| Status | Active |



Community Information

Address 110 Moberly Road
Subdivision NONE
City Grande Cache
County Greenview No. 16, M.D. of
Province Alberta
Postal Code T0E 0Y0

Amenities

Parking Spaces 3
Parking Off Street

Interior

Interior Features Walk-In Closet(s)
Appliances Dishwasher, Dryer, Electric S
Heating In Floor, Forced Air
Cooling None
Fireplace Yes
of Fireplaces 1
Fireplaces Gas
Has Basement Yes
Basement Exterior Entry, Finished, Full,

Exterior

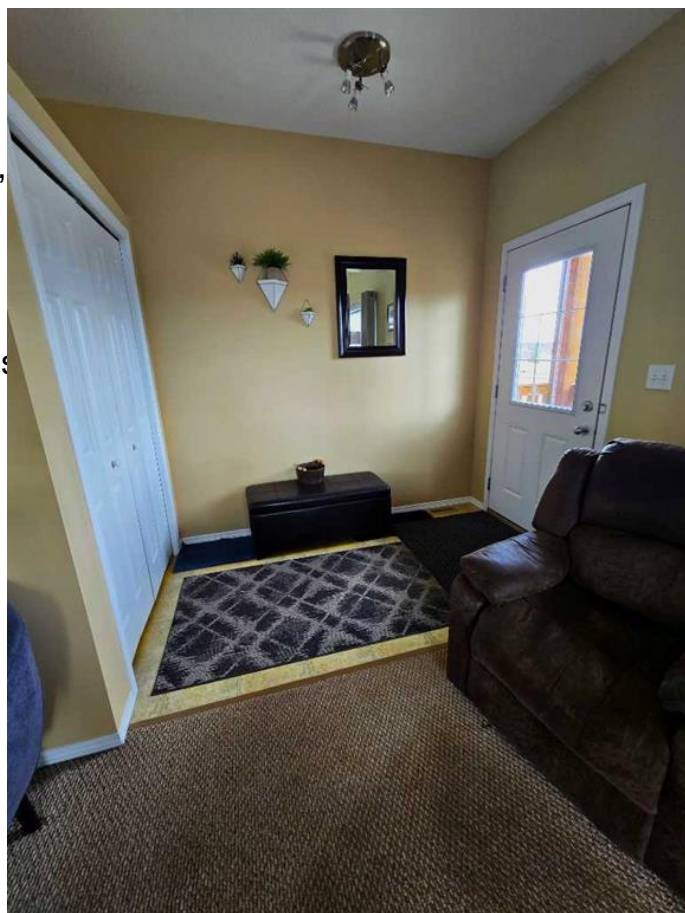
Exterior Features None
Lot Description Back Yard, Few Trees, Lands
Roof Asphalt Shingle
Construction Vinyl Siding
Foundation Poured Concrete

Additional Information

Date Listed April 16th, 2025
Days on Market 66
Zoning RE

Listing Details

Listing Office 2% Realty Edge AB



Data is supplied by Pillar 9â„¢ MLSÂ® System. Pillar 9â„¢ is the owner of the copyright in its MLSÂ® System. Data is deemed reliable but is not guaranteed accurate by Pillar 9â„¢. The trademarks MLSÂ®, Multiple Listing ServiceÂ® and the associated logos are owned by The Canadian Real Estate Association (CREA) and identify the quality of services

provided by real estate professionals who are members of CREA. Used under license.