

# \$379,900 - 14 Hansen Close, Sylvan Lake

MLS® #A2209469

**\$379,900**

4 Bedroom, 2.00 Bathroom, 1,135 sqft

Residential on 0.09 Acres

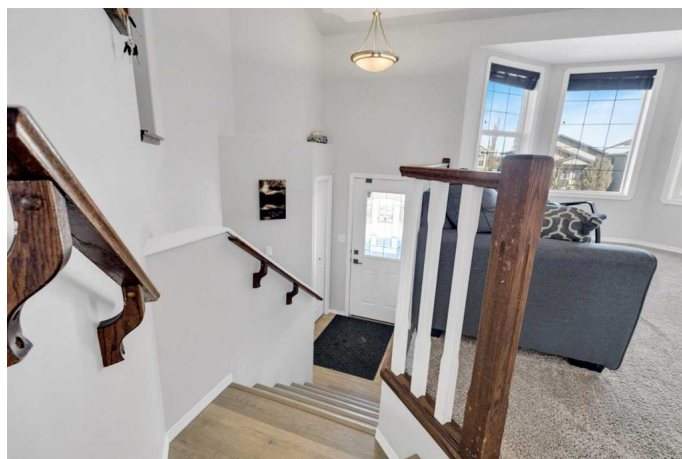
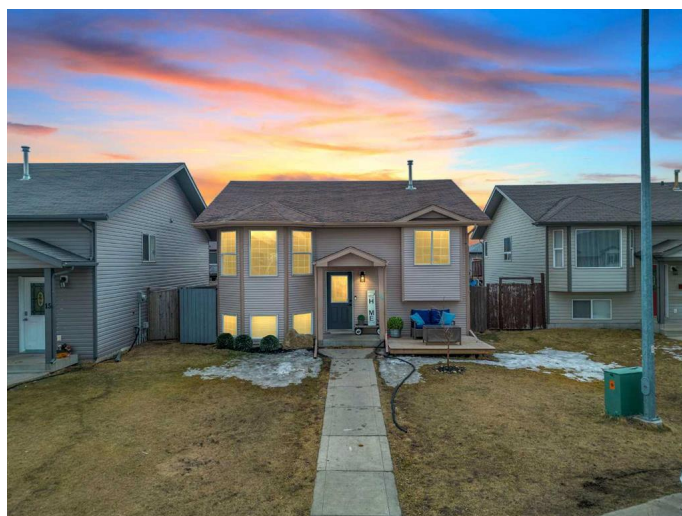
Hewlett Park, Sylvan Lake, Alberta

Beautiful home located at the end of a family oriented close. This fully finished bi-level has the perfect floor plan for a growing family. The main floor features an open concept floor plan which includes vaulted ceilings in the living room, dining room and kitchen area. Plus there are 3 bedrooms! Off the kitchen is a garden door to the deck which has a privacy screen and a children's slide off the deck for added fun! The yard is fenced in, ready for your animals too! There's also a 4pc. Bathroom on the main floor. The basement has another bedroom, a den with barn doors- could be used as another bedroom is necessary but makes the perfect home office or toy storage area! There's also another 4pc. bathroom, spacious family area, laundry & storage. The south side of the shingles were replaced in August of 2023.

Built in 2005

## Essential Information

MLS® #	A2209469
Price	\$379,900
Bedrooms	4
Bathrooms	2.00
Full Baths	2
Square Footage	1,135
Acres	0.09
Year Built	2005



Type	Residential
Sub-Type	Detached
Style	Bi-Level
Status	Active

### **Community Information**

Address	14 Hansen Close
Subdivision	Hewlett Park
City	Sylvan Lake
County	Red Deer County
Province	Alberta
Postal Code	T4S 2P1

### **Amenities**

Parking Spaces	2
Parking	None, On Street

### **Interior**

Interior Features	Breakfast Bar, Ceiling Fan(s), Vaulted Ceiling(s)
Appliances	Dishwasher, Microwave, Refrigerator, Stove(s), Window Coverings
Heating	Forced Air, Natural Gas
Cooling	None
Has Basement	Yes
Basement	Finished, Full

### **Exterior**

Exterior Features	None
Lot Description	Back Lane, Cul-De-Sac, Street Lighting
Roof	Asphalt Shingle
Construction	Vinyl Siding
Foundation	Poured Concrete

### **Additional Information**

Date Listed	April 8th, 2025
Days on Market	23
Zoning	R5

### **Listing Details**

Listing Office	Century 21 Maximum
----------------	--------------------

Data is supplied by Pillar 9â„¢ MLS® System. Pillar 9â„¢ is the owner of the copyright in its MLS® System. Data is deemed reliable but is not guaranteed accurate by Pillar 9â„¢. The trademarks MLS®, Multiple Listing Service® and the associated logos are owned by The Canadian Real Estate Association (CREA) and identify the quality of services provided by real estate professionals who are members of CREA. Used under license.