

# \$68,000 - 346, 133 Jarvis Street, Hinton

MLS® #A2199954

**\$68,000**

2 Bedroom, 1.00 Bathroom, 1,088 sqft  
Mobile on 0.00 Acres

Terrace Heights, Hinton, Alberta

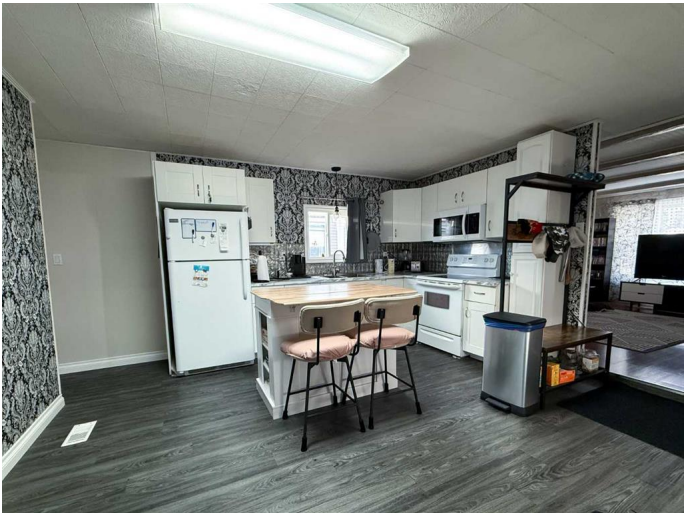
This charming 2-bedroom, 1-bathroom mobile home has been beautifully renovated, offering modern finishes and a cozy living space. With updated flooring and stylish upgrades throughout, it's ready to move in and enjoy. Perfectly suited for those seeking an affordable and low-maintenance home, this mobile home is ideal for first-time buyers or anyone looking to downsize. Outside features a large covered patio and a large fully fenced yard with a powered shed. Conveniently located near shopping and local amenities, it provides the perfect balance of comfort and convenience.

Built in 1976

## Essential Information

MLS® #	A2199954
Price	\$68,000
Bedrooms	2
Bathrooms	1.00
Full Baths	1
Square Footage	1,088
Acres	0.00
Year Built	1976
Type	Mobile
Sub-Type	Mobile
Style	Single Wide Mobile Home
Status	Active

## Community Information



Address	346, 133 Jarvis Street
Subdivision	Terrace Heights
City	Hinton
County	Yellowhead County
Province	Alberta
Postal Code	T7V 1R9

### **Amenities**

Parking Spaces	2
Parking	Parking Pad, RV Access/Parking

### **Interior**

Appliances	Washer/Dryer, Wall/Window Air Conditioner, Electric Stove, Microwave, Refrigerator, Window Coverings
Heating	Forced Air, Natural Gas

### **Exterior**

Roof	Metal
------	-------

### **Additional Information**

Date Listed	March 6th, 2025
Days on Market	161

### **Listing Details**

Listing Office	ROYAL LEPAGE ANDRE KOPP & ASSOCIATES
----------------	--------------------------------------

Data is supplied by Pillar 9â„¢ MLS® System. Pillar 9â„¢ is the owner of the copyright in its MLS® System. Data is deemed reliable but is not guaranteed accurate by Pillar 9â„¢. The trademarks MLS®, Multiple Listing Service® and the associated logos are owned by The Canadian Real Estate Association (CREA) and identify the quality of services provided by real estate professionals who are members of CREA. Used under license.