

# \$4,200,000 - On Range Road 28-4, Rural Lacombe County

---

MLS® #A2197360

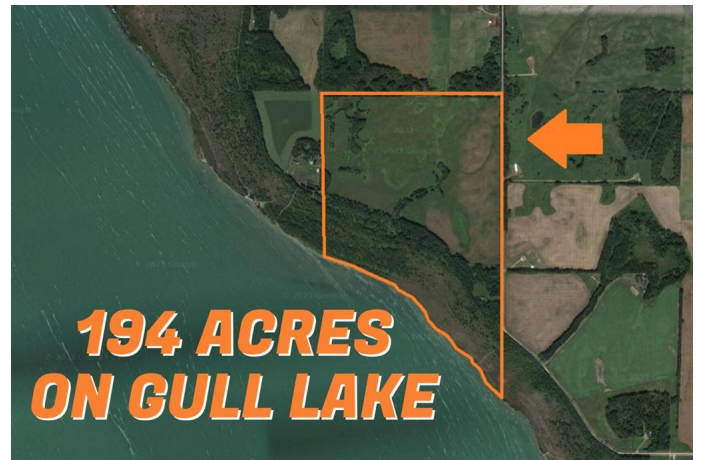
**\$4,200,000**

0 Bedroom, 0.00 Bathroom,  
Land on 194.00 Acres

NONE, Rural Lacombe County, Alberta

**AMAZING INVESTMENT OPPORTUNITY!!**

194 acres located on beautiful Gull Lake.  
Popular for its recreation and great fishing and centrally located between Calgary and Edmonton, this parcel of land is ready for future subdivision in Central Alberta. No set development plan means you can be the artist with this blank canvas. Potential for multiple residences per lot.



## Essential Information

|           |                 |
|-----------|-----------------|
| MLS® #    | A2197360        |
| Price     | \$4,200,000     |
| Bathrooms | 0.00            |
| Acres     | 194.00          |
| Type      | Land            |
| Sub-Type  | Commercial Land |
| Status    | Active          |

## Community Information

|             |                      |
|-------------|----------------------|
| Address     | On Range Road 28-4   |
| Subdivision | NONE                 |
| City        | Rural Lacombe County |
| County      | Lacombe County       |
| Province    | Alberta              |
| Postal Code | T4L 2N1              |

## Additional Information

|                |                     |
|----------------|---------------------|
| Date Listed    | February 26th, 2025 |
| Days on Market | 157                 |
| Zoning         | AG                  |

## **Listing Details**

|                |                        |
|----------------|------------------------|
| Listing Office | Greater Property Group |
|----------------|------------------------|

Data is supplied by Pillar 9â„¢ MLS® System. Pillar 9â„¢ is the owner of the copyright in its MLS® System. Data is deemed reliable but is not guaranteed accurate by Pillar 9â„¢. The trademarks MLS®, Multiple Listing Service® and the associated logos are owned by The Canadian Real Estate Association (CREA) and identify the quality of services provided by real estate professionals who are members of CREA. Used under license.