

\$410,000 - 5008 35 Street, Sylvan Lake

MLS® #A2190622

\$410,000

2 Bedroom, 1.00 Bathroom, 701 sqft

Residential on 0.13 Acres

Cottage Area, Sylvan Lake, Alberta

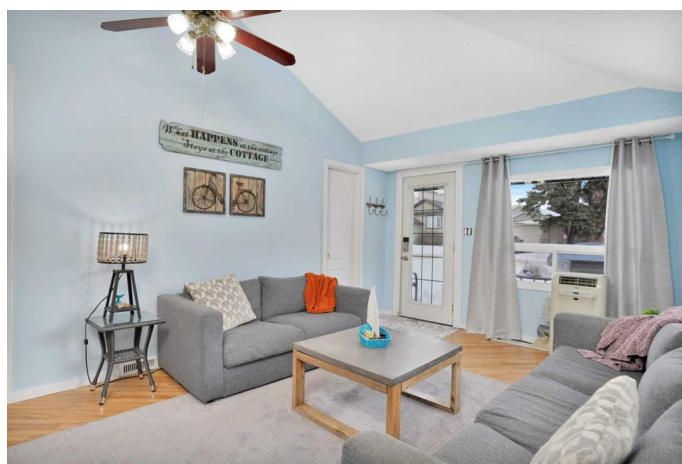
Welcome to this 2-bedroom, 1-bathroom cottage featuring the perfect lakeside retreat, just steps away from the water. Enjoy the peace and serenity of the lake year-round with a spacious backyard, ideal for outdoor gatherings and relaxation. The detached garage provides convenient storage for all your lake toys and equipment plus an additional bunkhouse offers extra space for guests. Whether you're looking for a year-round home or a weekend getaway to the lake, this cute cottage has everything you need for a lakeside lifestyle!

Built in 1945

Essential Information

MLS® #	A2190622
Price	\$410,000
Bedrooms	2
Bathrooms	1.00
Full Baths	1
Square Footage	701
Acres	0.13
Year Built	1945
Type	Residential
Sub-Type	Detached
Style	Bungalow
Status	Active

Community Information



Address	5008 35 Street
Subdivision	Cottage Area
City	Sylvan Lake
County	Red Deer County
Province	Alberta
Postal Code	T4S 1B3

Amenities

Parking Spaces	3
Parking	Gravel Driveway, Single Garage Detached
# of Garages	1

Interior

Interior Features	Ceiling Fan(s)
Appliances	Microwave, Stove(s), Washer/Dryer, Range Hood, Window Coverings
Heating	Forced Air, Natural Gas
Cooling	None
Basement	None

Exterior

Exterior Features	Fire Pit
Lot Description	Level, Standard Shaped Lot
Roof	Asphalt
Construction	Wood Siding, Vinyl Siding
Foundation	None

Additional Information

Date Listed	January 31st, 2025
Days on Market	136
Zoning	R5

Listing Details

Listing Office	eXp Realty
----------------	------------

Data is supplied by Pillar 9â„¢ MLS® System. Pillar 9â„¢ is the owner of the copyright in its MLS® System. Data is deemed reliable but is not guaranteed accurate by Pillar 9â„¢. The trademarks MLS®, Multiple Listing Service® and the associated logos are owned by The Canadian Real Estate Association (CREA) and identify the quality of services provided by real estate professionals who are members of CREA. Used under license.