

\$35,000 - 5218 Imperial Lane, Coronation

MLS® #A2165464

\$35,000

0 Bedroom, 0.00 Bathroom,
Land on 0.20 Acres

NONE, Coronation, Alberta

Large lot in Coronation, backs onto Coronation Golf Course, three -25 ft lots-9-11, to be added onto existing title 0015720087, empty lots 12-15 to the west have not been developed are for sale also @ \$55000- 5222 Imperial Lane, Linc#0036583757.

Essential Information

| | |
|-----------|------------------|
| MLS® # | A2165464 |
| Price | \$35,000 |
| Bathrooms | 0.00 |
| Acres | 0.20 |
| Type | Land |
| Sub-Type | Residential Land |
| Status | Active |

Community Information

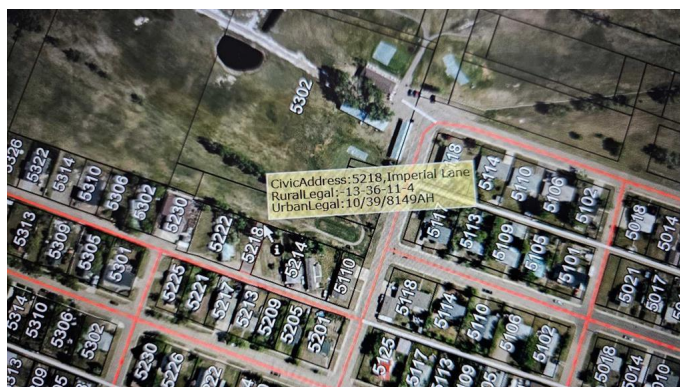
| | |
|-------------|------------------------------|
| Address | 5218 Imperial Lane |
| Subdivision | NONE |
| City | Coronation |
| County | Paintearth No. 18, County of |
| Province | Alberta |
| Postal Code | T0C1C0 |

Exterior

| | |
|-----------------|--------------------------------------|
| Lot Description | No Neighbours Behind, On Golf Course |
|-----------------|--------------------------------------|

Additional Information

| | |
|-------------|----------------------|
| Date Listed | September 12th, 2024 |
|-------------|----------------------|



| | |
|----------------|-----|
| Days on Market | 362 |
| Zoning | R1 |

Listing Details

| | |
|----------------|------------------------|
| Listing Office | Sutton Landmark Realty |
|----------------|------------------------|

Data is supplied by Pillar 9â„¢ MLS® System. Pillar 9â„¢ is the owner of the copyright in its MLS® System. Data is deemed reliable but is not guaranteed accurate by Pillar 9â„¢. The trademarks MLS®, Multiple Listing Service® and the associated logos are owned by The Canadian Real Estate Association (CREA) and identify the quality of services provided by real estate professionals who are members of CREA. Used under license.