

\$2,100 - 102, 20 Cuendet Industrial Way, Sylvan Lake

MLS® #A2146551

\$2,100

0 Bedroom, 0.00 Bathroom,
Commercial on 0.00 Acres

Beju Industrial Park, Sylvan Lake, Alberta

LOCATION LOCATION, easy access to Highway 20 - this bay offers 2400 sq ft of main floor work space, front and rear 14ft overhead doors also upper mezzanine with 1024 sq ft, including reception area, office and washroom.

Lease is \$2100/month plus triple net. Outside you will find an abundance of gated, shared parking. Landlord will remove all leasehold improvements if required. Your business will love it here.

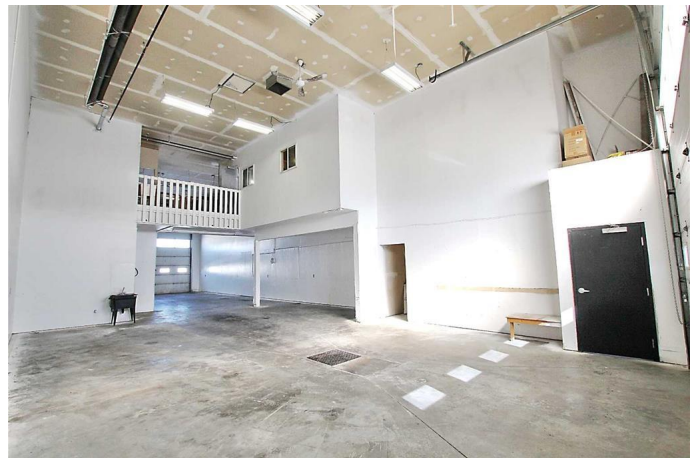
Built in 2012

Essential Information

MLS® #	A2146551
Price	\$2,100
Bathrooms	0.00
Acres	0.00
Year Built	2012
Type	Commercial
Sub-Type	Industrial
Status	Active

Community Information

Address	102, 20 Cuendet Industrial Way
Subdivision	Beju Industrial Park
City	Sylvan Lake
County	Red Deer County
Province	Alberta
Postal Code	T4S 2J8



Additional Information

Date Listed	July 2nd, 2024
Days on Market	381
Zoning	I1

Listing Details

Listing Office	RE/MAX real estate central alberta
----------------	------------------------------------

Data is supplied by Pillar 9â„¢ MLS® System. Pillar 9â„¢ is the owner of the copyright in its MLS® System. Data is deemed reliable but is not guaranteed accurate by Pillar 9â„¢. The trademarks MLS®, Multiple Listing Service® and the associated logos are owned by The Canadian Real Estate Association (CREA) and identify the quality of services provided by real estate professionals who are members of CREA. Used under license.