

# \$500,000 - 5;11;73;2;se Range Rd 112, Faust

MLS® #A2134055

**\$500,000**

0 Bedroom, 0.00 Bathroom,  
Land on 160.00 Acres

NONE, Faust, Alberta

Seeking a wilderness getaway, acreage development, farmland, woodlot potential? This 160 fully treed 1/4 section south of Faust, AB maybe what you are looking for. This parcel is fully wooded with no past development or logging on it; trees are fully mature and mixed in variety. Build a cabin? Clear for farming? Log the trees for income? There are many possibilities for this land parcel. Road access would have to be built off of Range Road 112. Well worth checking out!!

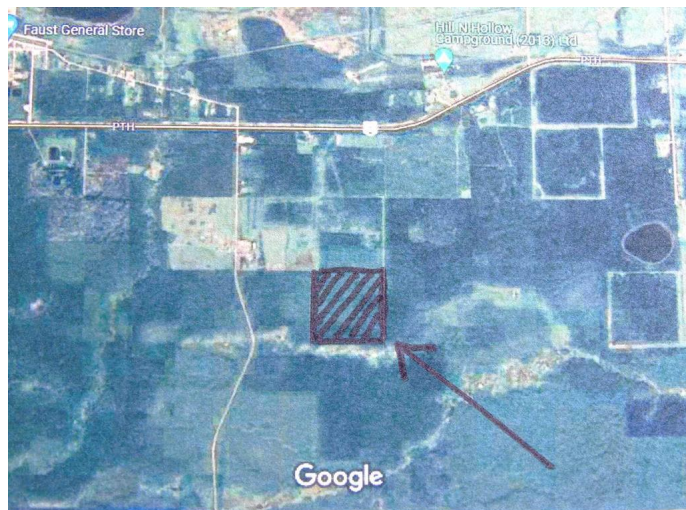
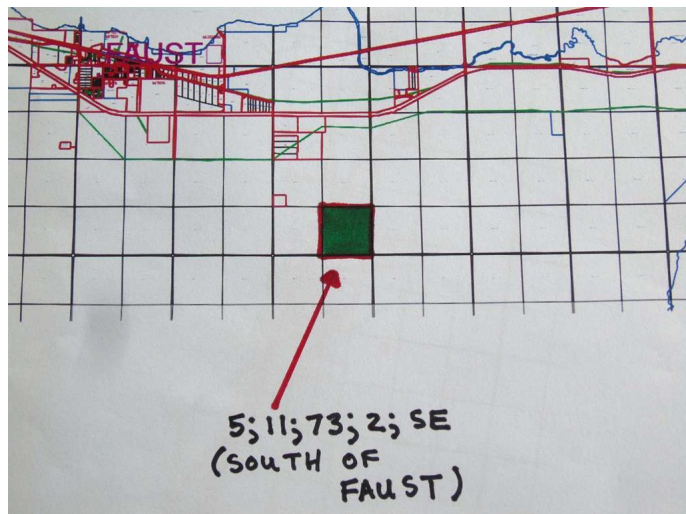
## Essential Information

MLS® #	A2134055
Price	\$500,000
Bathrooms	0.00
Acres	160.00
Type	Land
Sub-Type	Residential Land
Status	Active

## Community Information

Address	5;11;73;2;se Range Rd 112
Subdivision	NONE
City	Faust
County	Big Lakes County
Province	Alberta
Postal Code	T0G 0X0

## Amenities



Utilities                      Natural Gas at Lot Line

### **Additional Information**

Date Listed                      May 20th, 2024

Days on Market                437

Zoning                            F - Farmland

### **Listing Details**

Listing Office                      CENTURY 21 NORTHERN REALTY

Data is supplied by Pillar 9â„¢ MLS® System. Pillar 9â„¢ is the owner of the copyright in its MLS® System. Data is deemed reliable but is not guaranteed accurate by Pillar 9â„¢. The trademarks MLS®, Multiple Listing Service® and the associated logos are owned by The Canadian Real Estate Association (CREA) and identify the quality of services provided by real estate professionals who are members of CREA. Used under license.