

\$249,900 - Nw-9-58-11-w5, Rural Woodlands County

MLS® #A2132920

\$249,900

0 Bedroom, 0.00 Bathroom,
Land on 160.00 Acres

NONE, Rural Woodlands County, Alberta

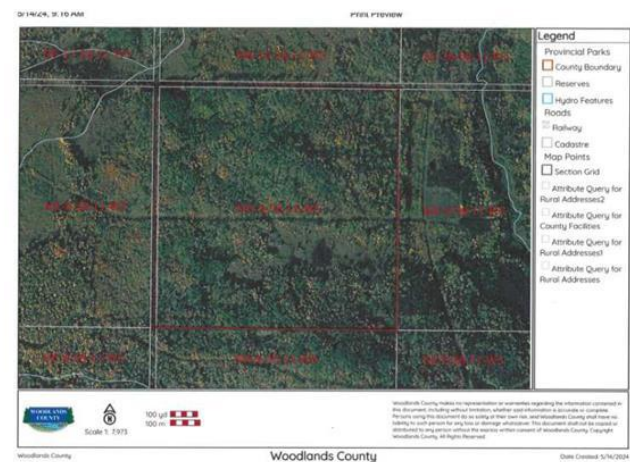
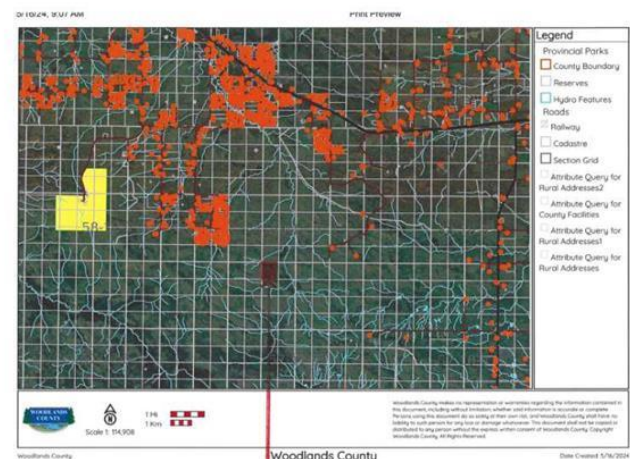
"SURROUNDED BY CROWN LAND ON ALL SIDES - FULL QUARTER !!!" Want a full quarter section with no neighbors for miles ? This 160 acres is located in Woodlands County , is all bush , and is surrounded by Crown land on all sides and can only be accessed by quad or sled. The perfect location to camp out away from any people. Excellent recreational quarter for hunting or just to get away from it all and be one with nature. Totally private as the nearest road is approximately 2.5 km away. Annual oil lease revenue of \$1900.00 .

Essential Information

MLS® #	A2132920
Price	\$249,900
Bathrooms	0.00
Acres	160.00
Type	Land
Sub-Type	Residential Land
Status	Active

Community Information

Address	Nw-9-58-11-w5
Subdivision	NONE
City	Rural Woodlands County
County	Woodlands County
Province	Alberta
Postal Code	T7S1N9



Additional Information

Date Listed	May 16th, 2024
Days on Market	401
Zoning	A2

Listing Details

Listing Office	RE/MAX ADVANTAGE (WHITECOURT)
----------------	-------------------------------

Data is supplied by Pillar 9â„¢ MLSÂ® System. Pillar 9â„¢ is the owner of the copyright in its MLSÂ® System. Data is deemed reliable but is not guaranteed accurate by Pillar 9â„¢. The trademarks MLSÂ®, Multiple Listing ServiceÂ® and the associated logos are owned by The Canadian Real Estate Association (CREA) and identify the quality of services provided by real estate professionals who are members of CREA. Used under license.